

# Auckland Presbytery Community Profile

## Geography

This presbytery is equivalent to

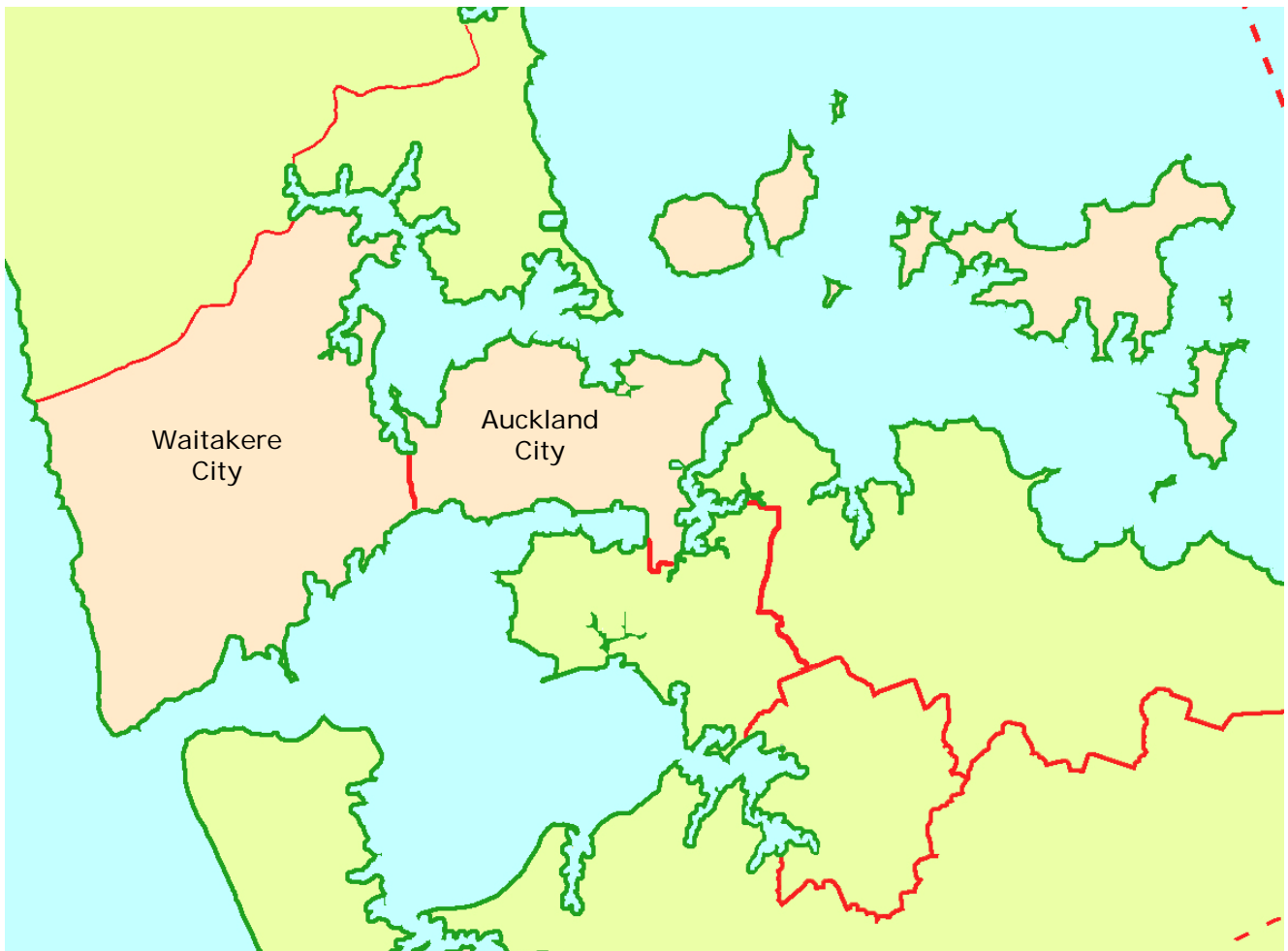
- Auckland Region areas of:
  - Waitakere City
  - Auckland City

Auckland Presbytery also includes churches in Mangere, Pakuranga, Howick and Botany Downs, but these have been included in the South Auckland Presbytery profiles because they come within the Manukau City statistics area and it is more logical to view them against this background. The statistics for Presbyterian attendance have been adjusted by subtracting these churches from this profile and adding them to the appropriate South Auckland profiles.

It is also equivalent to

- Waitakere Area of Waitemata Police District plus the Auckland City Police District
- Auckland District Health Board plus the Waitemata District Health Board (only the Waitakere City portion)

**Map of Auckland Presbytery**





# Auckland Presbytery region at a glance

Some of the significant highs and lows for the district and city in this presbytery compared with the 72 districts in mainland New Zealand are as follows: (**highest/high** in New Zealand; **lowest/low** in New Zealand). Data is from the 2006 census.

Population general	Auckland City	Waitakere City
Median age (NZ: 35 years)	33 years	33 years
% of people 0-24 years old	35.43%	37.94%
% of people 25-44 years old	<b>33.66%</b>	<b>31.23%</b>
% of people 45-64 years old	21.34%	21.53%
% of people 65 years old and over	9.58%	9.31%
Population density (people/km <sup>2</sup> ) (NZ: 9.71)	605.30	507.44
Population growth (2001-2006)	10.04%	10.49%

## Work and Education

% receiving income from wages/salary*	60.62%	61.35%
% receiving income from self-employment*	16.45%	14.07%
% receiving income from investments*	25.21%	17.58%
% as full-time students*	<b>14.81%</b>	<b>11.08%</b>
% without any educational qualification*	13.40%	21.15%
% graduated from university*	<b>26.07%</b>	12.98%

## Ethnicity

% European	54.36%	59.01%
% Maori	7.80%	13.06%
% Pacific Islander	13.11%	15.30%
% Asian	<b>24.45%</b>	16.16%

## Family and Household

couples with children (as % of families)	43.95%	46.49%
couples without children (as % of families)	38.17%	32.33%
% solo parents (as % of families with children)	28.91%	31.30%
% widowed, or bereaved civil union*	3.96%	4.01%
% who have never married/partnered*	<b>29.14%</b>	23.91%
Median family income	\$72,900	\$61,100
Mean weekly rental for households renting	<b>\$294</b>	\$254
% of households with 6 or more people	5.29%	6.79%
% of households with only one occupant	23.17%	17.78%

## Benefits

% receiving unemployment benefit*	3.25%	2.67%
% receiving sickness benefit*	2.49%	2.88%
% receiving domestic purposes benefit*	2.05%	3.69%
% receiving New Zealand superannuation*	10.02%	10.85%

## Faith

% Christian	46.23%	46.34%
% Maori Christian	0.77%	1.07%
% having no religion	30.49%	31.73%
% following New Age/Spiritualism	0.46%	0.56%
% Hindu	<b>4.80%</b>	<b>3.14%</b>
% Islam	<b>2.56%</b>	<b>1.93%</b>
% Buddhist	<b>2.82%</b>	<b>1.86%</b>

Notes:

- Statistics with (\*) are for the population aged 15 years and older
- "family" is defined as the total of couples with children plus couples without children plus solo parents
- Statistics in **bold** are 2<sup>nd</sup> highest/2<sup>nd</sup> lowest in New Zealand

## General Comments

This presbytery, and both of the cities that it encompasses, are characterised by

- Young population age structure (particularly biased towards the 25-44 year age group)
- High population density and growth
- Much ethnic diversity and consequently, less European presence than other parts of New Zealand
- An emphasis on education, with high proportions of students and university graduates

Auckland city is one quarter Asian, with a high proportion of singles, high household incomes and high rents.

Waitakere City is also ethnically diverse, with many Asians, but also a high proportion of Pacific Islanders. It is a place for families and large households, rather than young singles or retired people. Incomes are lower than Auckland but rentals are still relatively high.

In terms of proportions of people living in the most deprived meshblocks, Waitakere City has 33.6% and Auckland City 30.2%, both near the New Zealand average.<sup>1</sup>

Suicide rates in the Auckland and Waitemata District Health Board areas are amongst the lowest in New Zealand (Auckland: 10.3/Waitemata 11.6 suicides/year/100,000 during the years 2002-2004).<sup>2</sup>

Numbers of non-casino gaming machines are low in both Auckland City (43.8/10,000 people) and even moreso in Waitakere City (24.9% - the lowest in New Zealand; the NZ average is 53.3).<sup>3</sup>

Both cities are religiously diverse, particularly Auckland City, which has the highest proportion of Hindu, Muslim and Buddhist of any New Zealand district, although the proportion as Christian is not markedly lower than in the rest of New Zealand. The Anglican denomination predominates, with but there is still a higher than average Presbyterian presence than for New Zealand as a whole. Presbyterian church attendance has declined, which is significant given the overall population increase. The age structure of the congregations is markedly older than the age structure of the overall population of the presbytery.

---

<sup>1</sup> NZDep2001 Index of Deprivation: A meshblock is the smallest area used for census data, typically contains around 110 people (a city block). The figure is for those living in decile 8-10 meshblocks.

<sup>2</sup> Miranda Devlin. Ministry of Health. 2006. *Suicide Facts: 2004–2005 data*.

<sup>3</sup> Kylie Mason. Ministry of Health. 2006. *Problem Gambling Geography of New Zealand 2005*. Wellington: Ministry of Health.

# Selected Statistics for Auckland Presbytery region

Note: The same statistic for all of New Zealand is given in square brackets e.g. [NZ: 20%]

## Population

At the 2006 Census of Population and Dwellings:

- o The census usually resident population count for Auckland Presbytery region was 591,108, a change of 10.18% since 2001 [NZ: change = 7.8%].

## Numbers of people counted

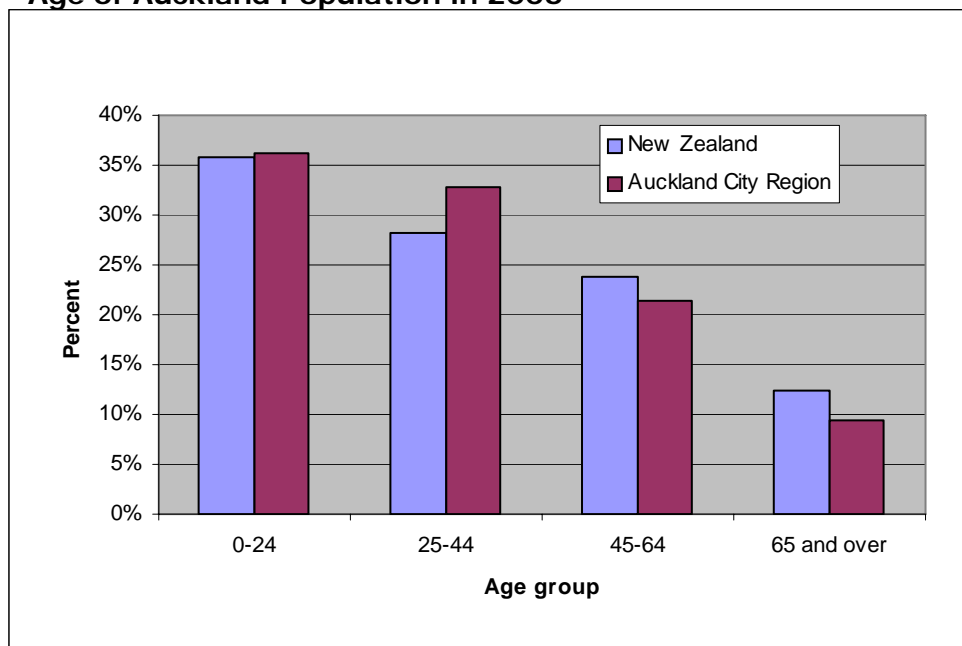
	Auckland	New Zealand
<b>Males</b>	287,929	1,965,648
<b>Females</b>	303,181	2,062,323
<b>Total</b>	591,108	4,027,971

## Age profile

At the 2006 Census:

- o 20.3% of people in Auckland Presbytery region were **under 15** years old [NZ: 21.5%].
- o 9.5% of people in Auckland Presbytery region were **over 65** years old [NZ: 12.3%].

**Age of Auckland Population in 2006**



## Employment

At the 2006 Census:

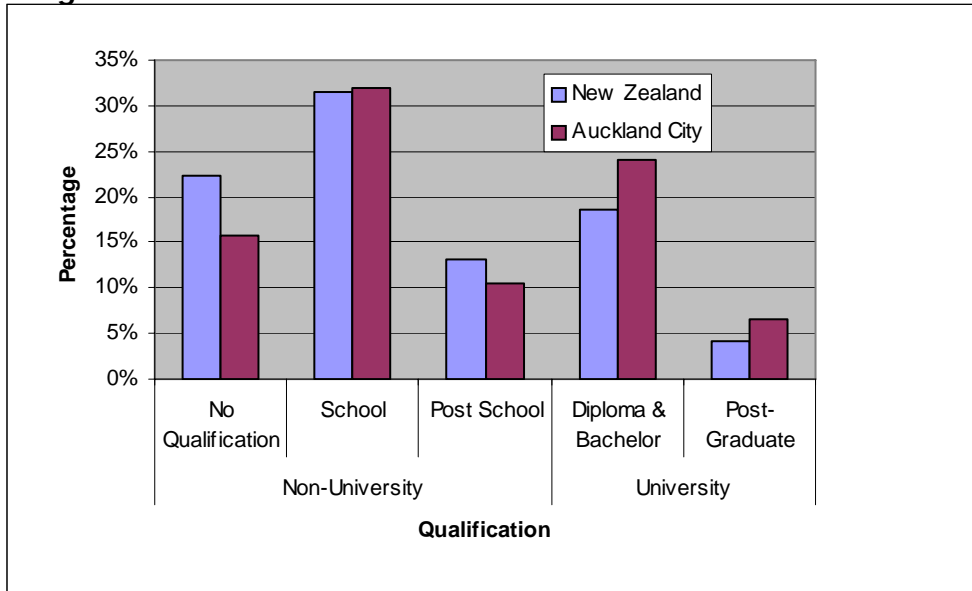
- o The **unemployment rate** in Auckland Presbytery region was 5.7% [NZ: 5.4%].
- o The most popular occupational group in Auckland Presbytery region was Professionals at 24.8% [NZ: professionals (18.9%)].

## Education

At the 2006 Census:

- 41.0% of people aged 15 years and over in Auckland Presbytery region had a **post-school qualification** [NZ: 35.8%].

**Highest Qualification in Auckland and NZ**

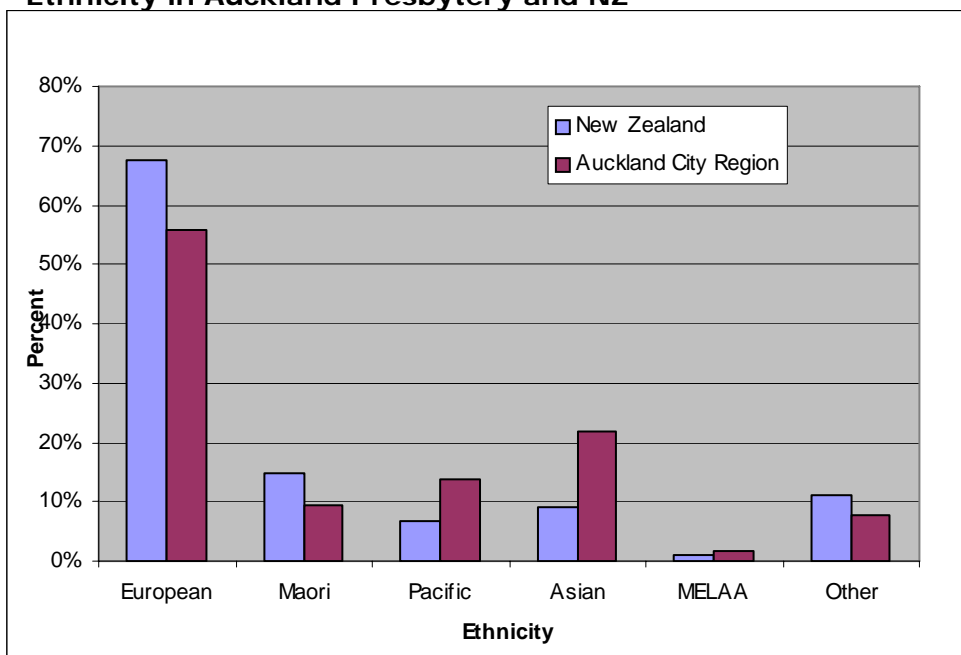


## Ethnic groups

At the 2006 Census:

- 55.8% of people in Auckland Presbytery region said they belong to the European ethnic group [NZ: 67.6%].

**Ethnicity in Auckland Presbytery and NZ**



MELAA = Middle East, Latin American and African

## Families

At the 2006 Census:

- o There were 149,004 families in Auckland Presbytery region.

## Family type

	Auckland	New Zealand
<b>Couples with child(ren)</b>	44.8%	42.0%
<b>Couples without children</b>	36.2%	39.9%
<b>1 parent with child(ren)</b>	19.0%	18.1%

## Marital Status

	Auckland	New Zealand
<b>Never married</b>	35.5%	31.4%
<b>Married (not civil union)</b>	40.6%	44.8%
<b>Previously married/partnered</b>	14.2%	16.0%

'Previously married/partnered' includes separated, divorced and bereaved.

## Households

At the 2006 Census, in Auckland Presbytery region there were 204,843 households:

- o **Mean number of household members:** [NZ: 2.7]

Waitakere City	\$254
Auckland City	\$294

- o **access to a telephone:** 87.0% of households [NZ: 91.7%].
- o **access to the internet:** 62.0% of households [NZ: 60.5%].
- o **access to a motor vehicle:** 91.4% of households [NZ: 92.2%].
- o **mean weekly rent** for rented permanent private dwellings: [NZ: \$225]

Waitakere City	3
Auckland City	2.7

- o **ownership of dwelling** with or without a mortgage, 59.6% [NZ: 66.9%].

## Income

At the 2006 Census:

- o The median family income in Auckland Presbytery region was: [NZ: \$59,000]

Waitakere City	\$61,100
Auckland City	\$72,900

### Family Income in Auckland and NZ



### Benefits and Allowances

The percentages of people 15 years of age and over in Auckland Presbytery region receiving the following government benefits and allowances are:

#### Benefits and Allowances

	Auckland region	New Zealand
Unemployment Benefit	2.81%	3.11%
Sickness Benefit	2.39%	2.38%
Domestic Purposes Benefit	2.33%	3.14%
Student Allowance	2.70%	2.17%

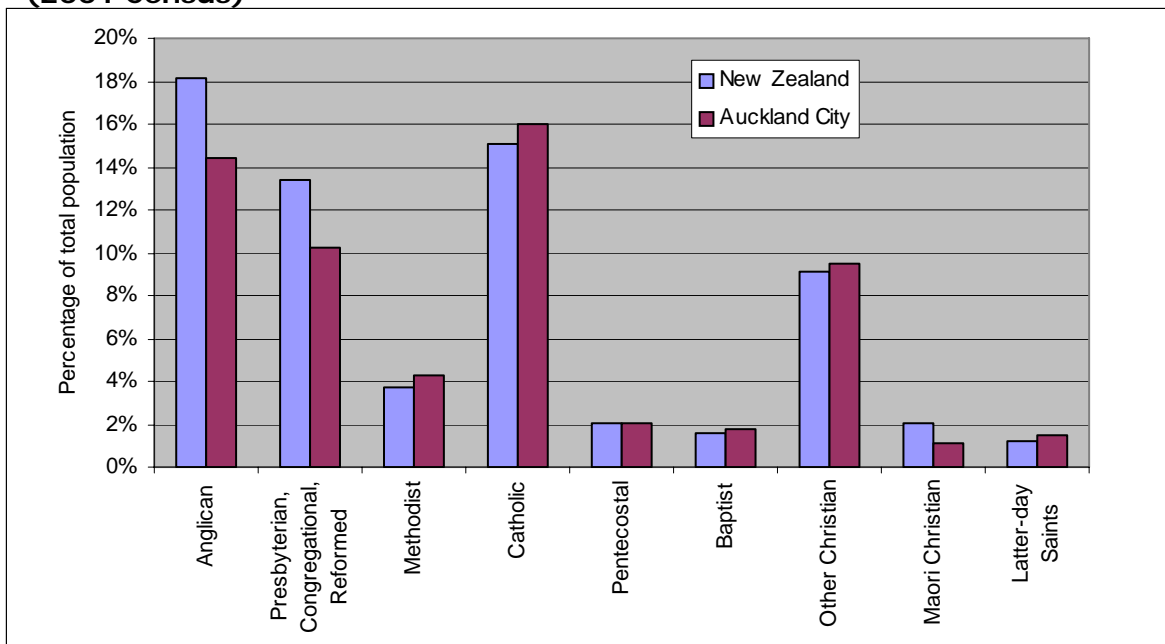
## Religion

### Religious Affiliation (2006 Census)

	Christian	Māori Christian	*New Age Religions	Judaism	Islam	Hindu	Buddhist	Other Religions	No Religion
New Zealand	58.03%	1.88%	0.57%	0.20%	1.03%	1.84%	1.50%	0.70%	37.13%
Auckland City	53.53%	1.00%	0.57%	0.42%	2.73%	4.94%	2.91%	0.75%	35.73%

\* includes Spiritualism

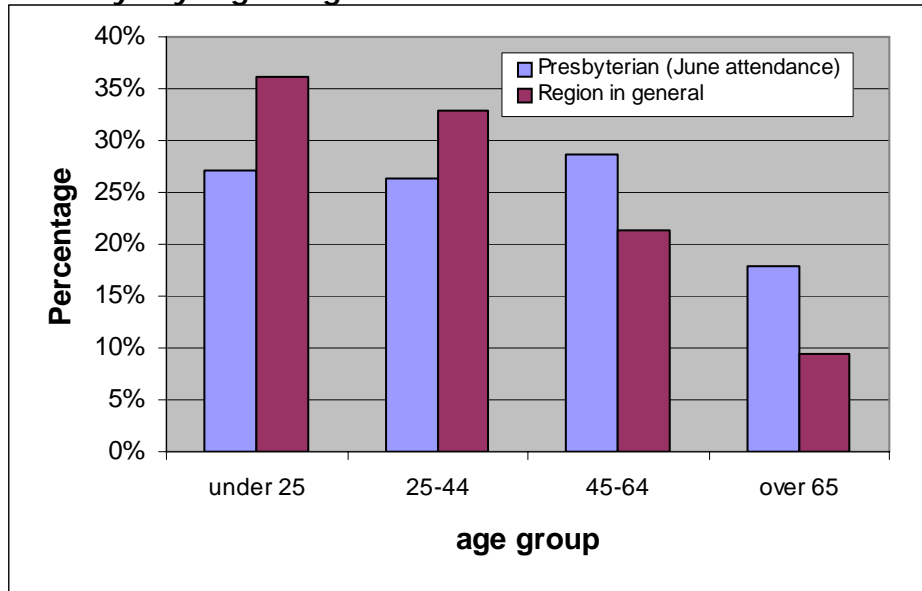
### Christian Denomination in Auckland Presbytery region and NZ (2001 Census)



“Other Christian” includes Church of Christ, Lutheran, Adventists, Orthodox, Evangelical non-denominational, Reformed, Uniting/Union, Salvation Army, smaller groups and Christians who did not define their denomination further

# Presbyterian Church Statistics for Auckland Presbytery

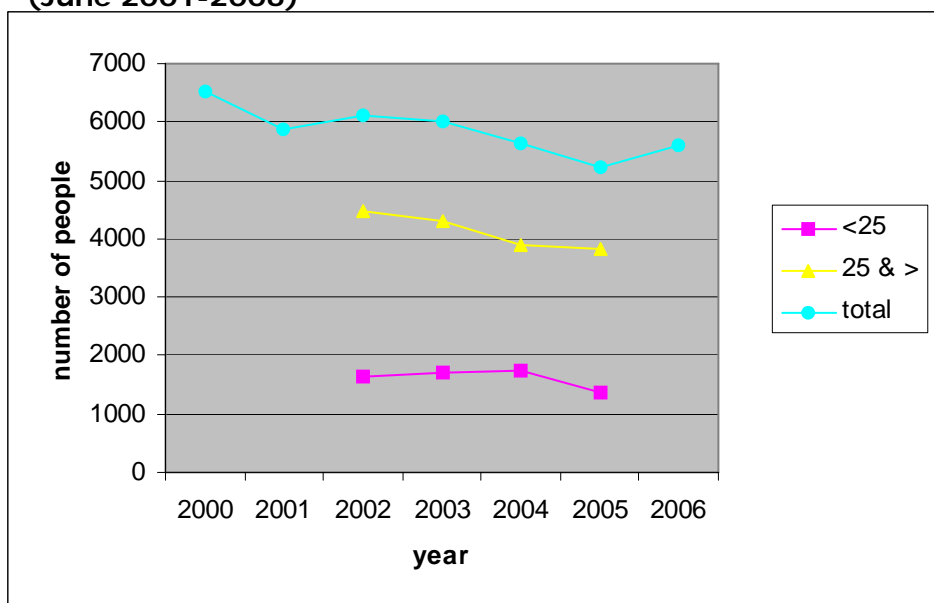
**Age of those attending worship during June 2005 in Auckland Presbytery compared with Auckland Presbytery region age structure**



Average numbers attending worship in June 2005 were 5214.

In the 2001 census, 46,560 people in Auckland Presbytery region identified themselves as being Presbyterian. Presbyterian statistics record an average June worship attendance of 5875 people in 2001 in the whole of Auckland Presbytery.

**Average Worship Attendance in Auckland Presbytery (June 2001-2006)**



Age categories are different for 2000, 2001 and 2006 statistics so only the total can be given