

South Auckland Franklin Presbytery Community Profile

Geography

South Auckland Presbytery for the purposes of these profiles, is made up of Manukau City (divided into Areas 'A' and 'B') and the districts of Papakura and Franklin. This profile gives statistics for Franklin District, which is principally rural but includes the town of Pukekohe.

A list of churches in South Auckland Presbytery is given on p3. Some of these churches are in the Auckland Presbytery but geographically they are located in South Auckland.

South Auckland Franklin presbytery area is located in:

- o Counties Manukau Police District South Area (which also covers Botany Downs-Clevedon ward and Papakura District).
- o Counties Manukau District Health Board (this DHB covers all of Manukau City, Franklin and Franklin Districts)

Map of South Auckland Franklin Presbytery area





List of parishes and their wards and Presbytery area profiles

Parish	Ward	Presbytery Profile
Mangere Pacific Islanders*	Mangere	<p style="text-align: center;">South Auckland 'A' (lower socio-economic)</p>
Mangere East St Marks Presbyterian Church*	Mangere	
Mangere Presbyterian Church*	Mangere	
Manukau Cook Islander Presbyterian Parish	Papatoetoe	
Manukau Pacific Islanders Samoan	Papatoetoe	
Manurewa St Andrews Presbyterian Church	Manurewa	
Manurewa St Pauls Presbyterian Church	Manurewa	
Otara Pacific Islanders	Otara	
Papatoetoe St Martins Presbyterian Church	Papatoetoe	
Papatoetoe St Johns & St Philips Church	Papatoetoe	

Bucklands Beach Co-operating*	Pakuranga	<p style="text-align: center;">South Auckland Franklin (higher socio-economic)</p>
Howick St Andrews Presbyterian Church*	Howick	
St Columba at Botany Presbyterian Church*	Botany Downs-Clevedon	
Clevedon Presbyterian Church of Clevedon	Botany Downs-Clevedon	
Pohutukawa Coast Presbyterian Church	Botany Downs-Clevedon	

Conifer Grove Takanini St Aidans Parish	-	<p style="text-align: center;">South Auckland Franklin</p>
Franklin Pacific Islanders	-	
Franklin & Districts First Presbyterian Church	-	
Franklin East Presbyterian Church	-	
Drury Presbyterian Parish	-	

Crossroads Christian Centre	-	<p style="text-align: center;">South Auckland Franklin</p>
Pukekohe St James Presbyterian Church	-	
Te Kauwhata St Andrews Presbyterian Church	-	
Tuakau Union Parish	-	
Waiuku and Districts Combined Churches	-	

*These churches belong to Auckland Presbytery

South Auckland Franklin Presbytery region at a glance

Some of the significant highs and lows for Franklin District, compared with its next-door neighbour Manukau City: (**highest/high** in New Zealand; **lowest/low** in New Zealand). Data is from the 2006 census.

Population general	Franklin District	Manukau City
Median age (NZ: 35 years)	36	31
% of people 0-24 years old	35.94%	41.99%
% of people 25-44 years old	28.02%	28.82%
% of people 45-64 years old	25.58%	20.85%
% of people 65 years old and over	10.45%	8.34%
Population density (people/km ²) (NZ: 9.71)	26.94	481.78
Population growth (2001-2006)	14.06%	16.16%

Work and Education

% receiving income from wages/salary*	59.63%	59.21%
% receiving income from self-employment*	22.60%	11.28%
% receiving income from investments*	23.17%	16.64%
% as full-time students*	7.21%	12.13%
% without any educational qualification*	24.96%	23.24%
% graduated from university*	8.93%	11.23%

Ethnicity

% European	74.64%	40.54%
% Maori	15.37%	15.26%
% Pacific Islander	3.58%	27.91%
% Asian	5.10%	21.50%

Family and Household

couples with children (as % of families)	46.50%	49.64%
couples without children (as % of families)	38.45%	27.66%
% solo parents (as % of families with children)	24.43%	31.38%
% widowed, or bereaved civil union*	4.07%	4.14%
% who have never married/partnered*	18.64%	24.89%
Median family income	\$67,300	\$59,100
Mean weekly rental for households renting	\$227	\$250
% of households with 6 or more people	5.27%	12.76%
% of households with only one occupant	17.74%	13.73%

Benefits

% receiving unemployment benefit*	2.00%	4.07%
% receiving sickness benefit*	1.75%	2.93%
% receiving domestic purposes benefit*	3.00%	3.99%
% receiving New Zealand superannuation*	13.23%	9.48%

Faith

% Christian	46.91%	52.57%
% Maori Christian	1.25%	1.80%
% having no religion	35.60%	22.39%
% following New Age/Spiritualism	0.46%	0.28%
% Hindu	1.41%	4.50%
% Islam	0.24%	2.10%
% Buddhist	0.57%	2.64%

Notes:

- Statistics with (*) are for the population aged 15 years and older
- "family" is defined as the total of couples with children plus couples without children plus solo parents
- Statistics in **bold** are 2nd highest/lowest in New Zealand

General Comments

The Franklin area of South Auckland Presbytery is mostly rural, with the small urban area of Pukekohe. Its statistics are closer to the New Zealand average values than the other areas (Papakura, Manukau City lower ('A') and higher ('B') socioeconomic areas) of South Auckland Presbytery. Ethnically it shows much less of the diversity of its northern presbytery companions.

Franklin District is experiencing high population growth, and is home to many couples with children. Socioeconomic indicators all appear healthy; incomes are high, households are not large and a lower than average number receive welfare benefits. Few people live in the most deprived meshblocks (18.3% are in deciles 8-10).¹

In terms of religion, a higher than average proportion of people follow no religion, although this is not associated with any significant reduction in the percentage of Christians. There is much less religious diversity than what is seen in the rest of this presbytery.

Presbyterian statistics, although appearing somewhat unreliable, do not show significant increases or decreases in worship attendance over the period 2000-2006, in spite of the general population increase. Church congregations are markedly older than the surrounding population.

¹ NZDep2001 Index of Deprivation: A meshblock is the smallest area used for census data, typically contains around 110 people (a city block). The figure is for those living in decile 8-10 meshblocks.

Selected Statistics for South Auckland Franklin Presbytery region

Note: The same statistic for all of New Zealand is given in square brackets e.g. [NZ: 20%]

Population

At the 2006 Census of Population and Dwellings:

- o The census usually resident population count for South Auckland Franklin Presbytery region was 58,938, a change of 14.11% since 2001 [NZ: change = 7.8%].

Numbers of people counted

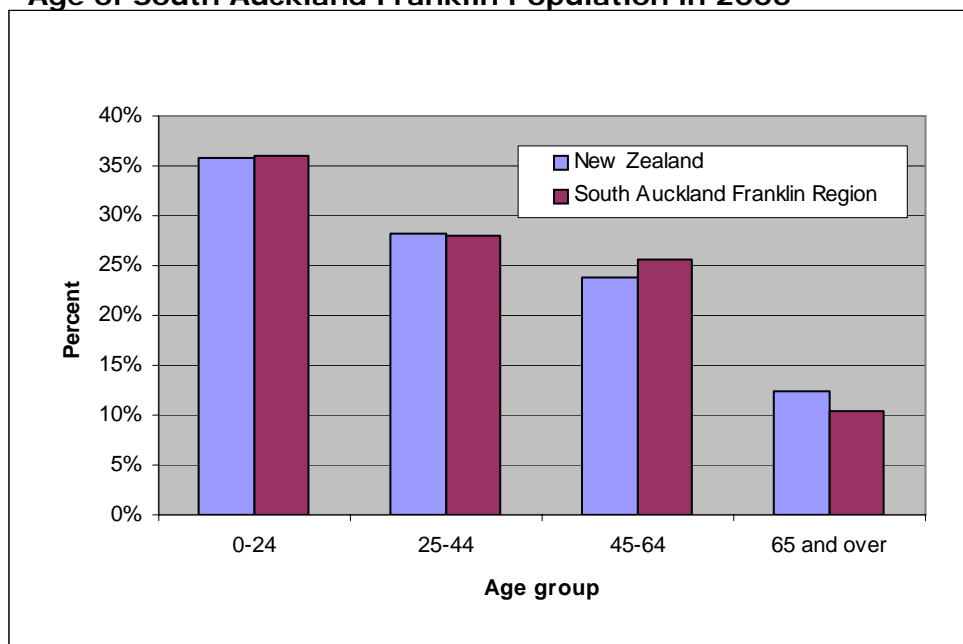
	South Auckland Franklin	New Zealand
Males	29,292	1,965,648
Females	29,646	2,062,323
Total	58,938	4,027,971

Age profile

At the 2006 Census:

- o 24.6% of people in South Auckland Franklin Presbytery region were **under 15** years old [NZ: 21.5%].
- o 10.5% of people in South Auckland Franklin Presbytery region were **over 65** years old [NZ: 12.3%].

Age of South Auckland Franklin Population in 2006



Employment

At the 2006 Census:

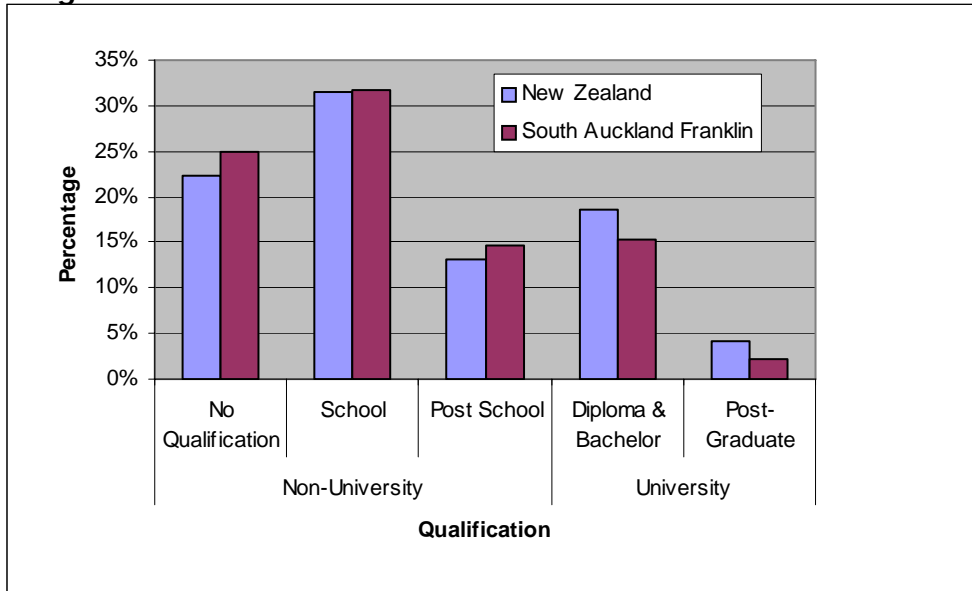
- o The **unemployment rate** in South Auckland Franklin Presbytery region was 3.8% [NZ: 5.4%].
- o The most popular occupational group in South Auckland Franklin Presbytery region was Managers at 20.6% [NZ: professionals (18.9%)].

Education

At the 2006 Census:

- o 32.1% of people aged 15 years and over in South Auckland Franklin Presbytery region had a **post-school qualification** [NZ: 35.8%].

Highest Qualification in South Auckland Franklin and NZ

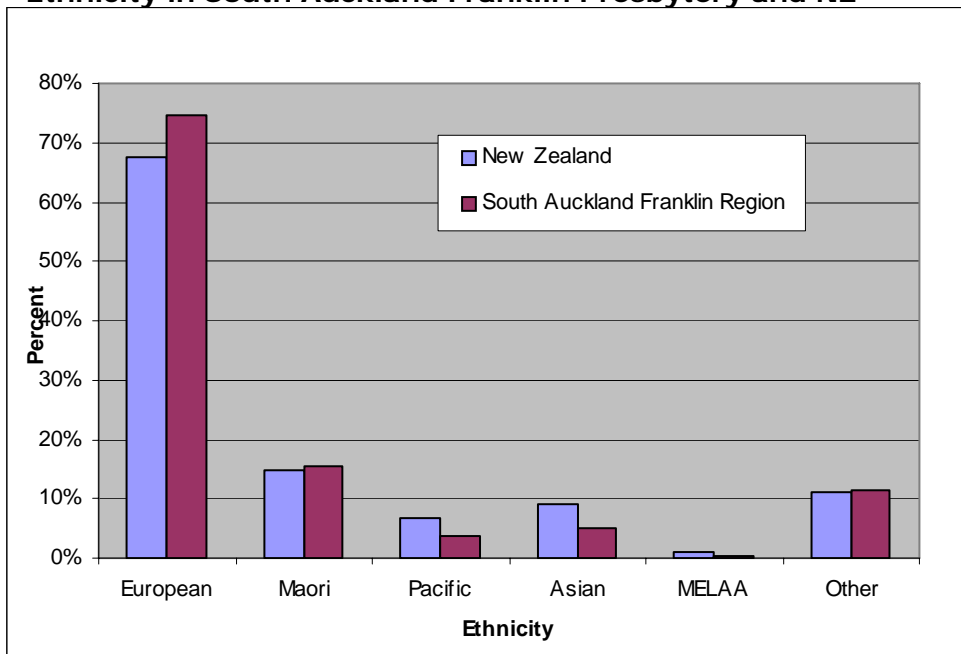


Ethnic groups

At the 2006 Census:

- o 74.6% of people in South Auckland Franklin Presbytery region said they belong to the European ethnic group [NZ: 67.6%].

Ethnicity in South Auckland Franklin Presbytery and NZ



MELAA = Middle East, Latin American and African

Families

At the 2006 Census:

- There were 16,173 families in South Auckland Franklin Presbytery region.

Family type

	South Auckland Franklin	New Zealand
Couples with child(ren)	46.5%	42.0%
Couples without children	38.4%	39.9%
1 parent with child(ren)	15.0%	18.1%

Marital Status

	South Auckland Franklin	New Zealand
Never married	25.8%	31.4%
Married (not civil union)	50.5%	44.8%
Previously married/partnered	14.9%	16.0%

'Previously married/partnered' includes separated, divorced and bereaved.

Households

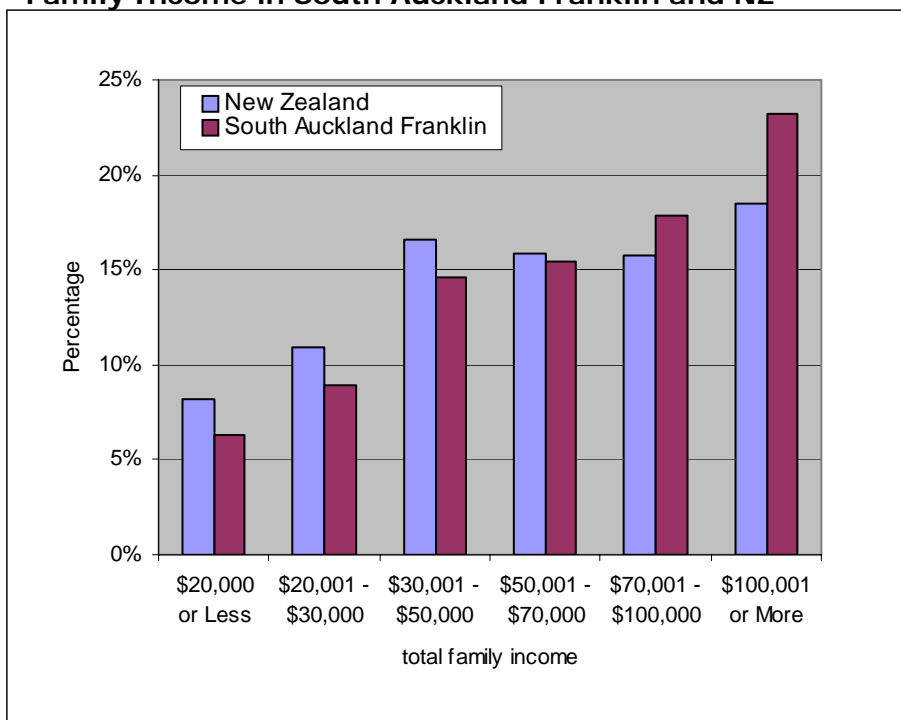
At the 2006 Census, in South Auckland Franklin Presbytery region there were 20,208 households:

- **Mean number of household members:** 2.8 [NZ: 2.7]
- **access to a telephone:** 85.9% of households [NZ: 91.7%].
- **access to the internet:** 58.5% of households [NZ: 60.5%].
- **access to a motor vehicle:** 95.9% of households [NZ: 92.2%].
- **mean weekly rent** for rented permanent private dwellings: \$227 [NZ: \$225]
- **ownership of dwelling** with or without a mortgage, 73.2% [NZ: 66.9%].

Income

At the 2006 Census the median family income in South Auckland Franklin Presbytery region was \$67,300 [NZ: \$59,000]

Family Income in South Auckland Franklin and NZ



Benefits and Allowances

The percentages of people 15 years of age and over in South Auckland Franklin Presbytery region receiving the following government benefits and allowances are:

Benefits and Allowances

	South Auckland Franklin region	New Zealand
Unemployment Benefit	1.86%	3.11%
Sickness Benefit	1.60%	2.38%
Domestic Purposes Benefit	2.79%	3.14%
Student Allowance	0.86%	2.17%

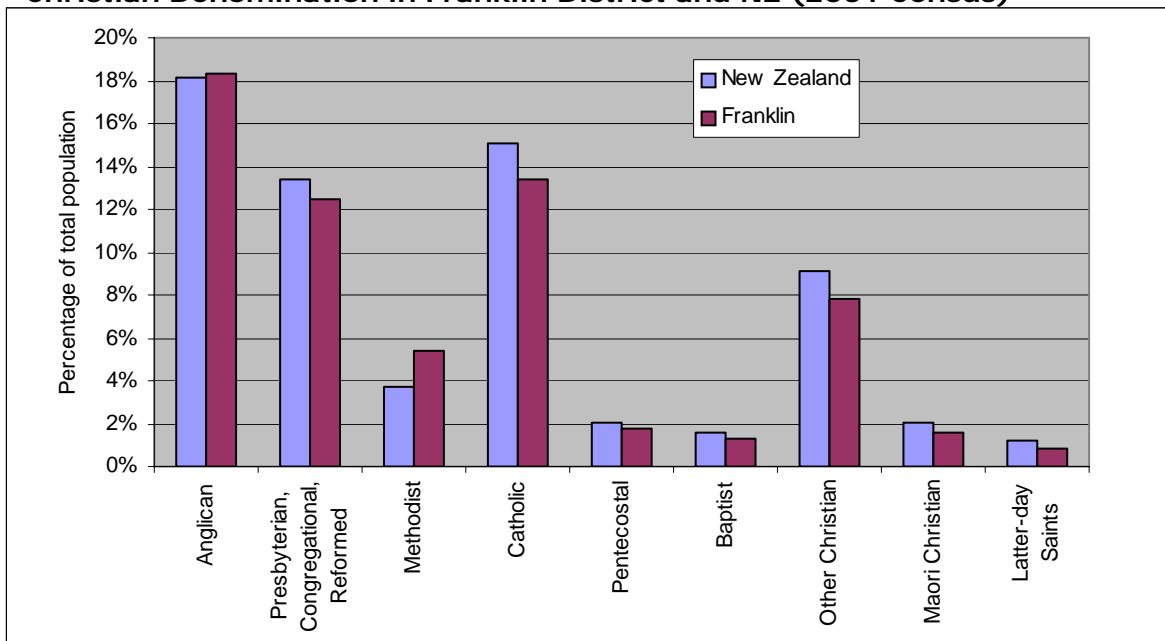
Religion

Religious Affiliation (2006 Census)

	Christian	Māori Christian	*New Age Religions	Judaism	Islam	Hindu	Buddhist	Other Religions	No Religion
New Zealand	58.03%	1.88%	0.57%	0.20%	1.03%	1.84%	1.50%	0.70%	37.13%
South Auckland Franklin	55.28%	1.48%	0.55%	0.11%	0.31%	1.64%	0.68%	0.88%	41.98%

* includes Spiritualism

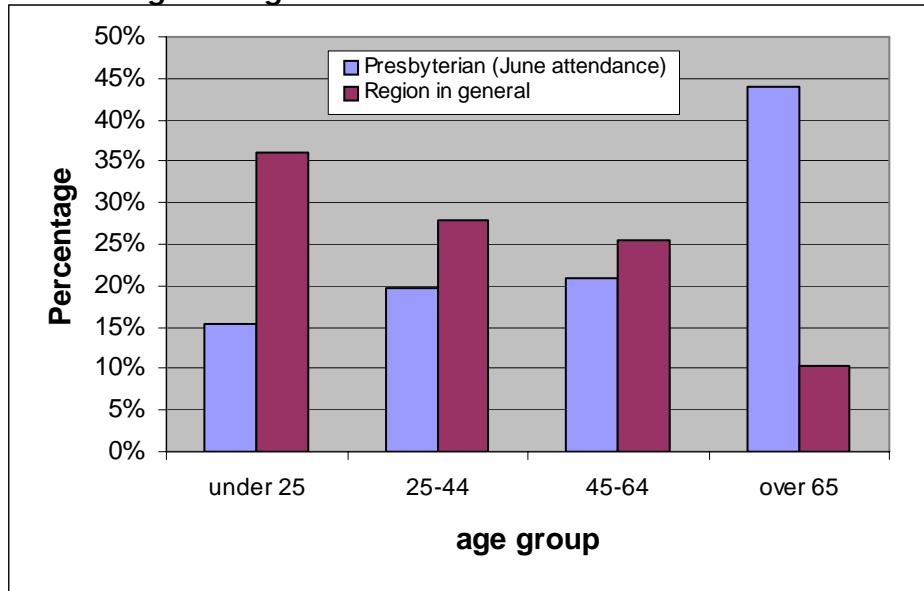
Christian Denomination in Franklin District and NZ (2001 Census)



"Other Christian" includes Church of Christ, Lutheran, Adventists, Orthodox, Evangelical non-denominational, Reformed, Uniting/Union, Salvation Army, smaller groups and Christians who did not define their denomination further

Presbyterian Church Statistics for South Auckland Franklin Presbytery

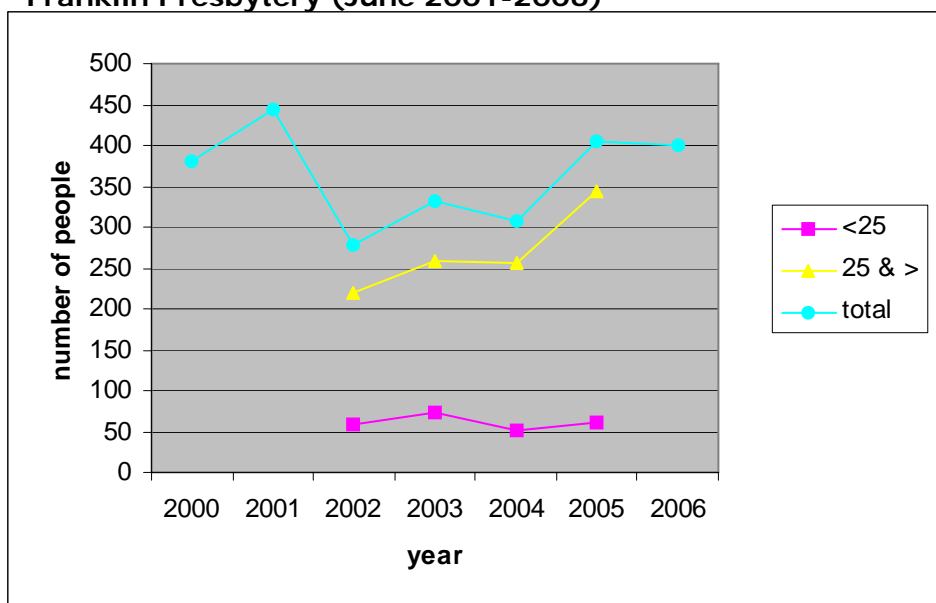
Age of those attending worship during June 2005 in South Auckland Franklin Presbytery compared with this same region's age structure



Average numbers attending worship in June 2005 were 405.

In the 2001 census, 5,334 people in Franklin District identified themselves as being Presbyterian. Presbyterian statistics record an average June worship attendance of 444 people in 2001 in the Franklin area of South Auckland Presbytery.

Average Worship Attendance in South Auckland Franklin Presbytery (June 2001-2006)



Age categories are different for 2000, 2001 and 2006 statistics so only the total can be given