

South Auckland 'A' Presbytery Community Profile

Geography

The district of Manukau City contains Presbyterian churches in both the Auckland Presbytery and the South Auckland Presbytery. It is more convenient and logical to treat Manukau City as a whole, and divide it into two areas; 'A' which is typically lower socio-economic, and 'B', typically higher socio-economic.

This profile gives statistics for area 'A', which is made up of the electoral wards of Mangere, Papatoetoe, Otara and Manurewa.

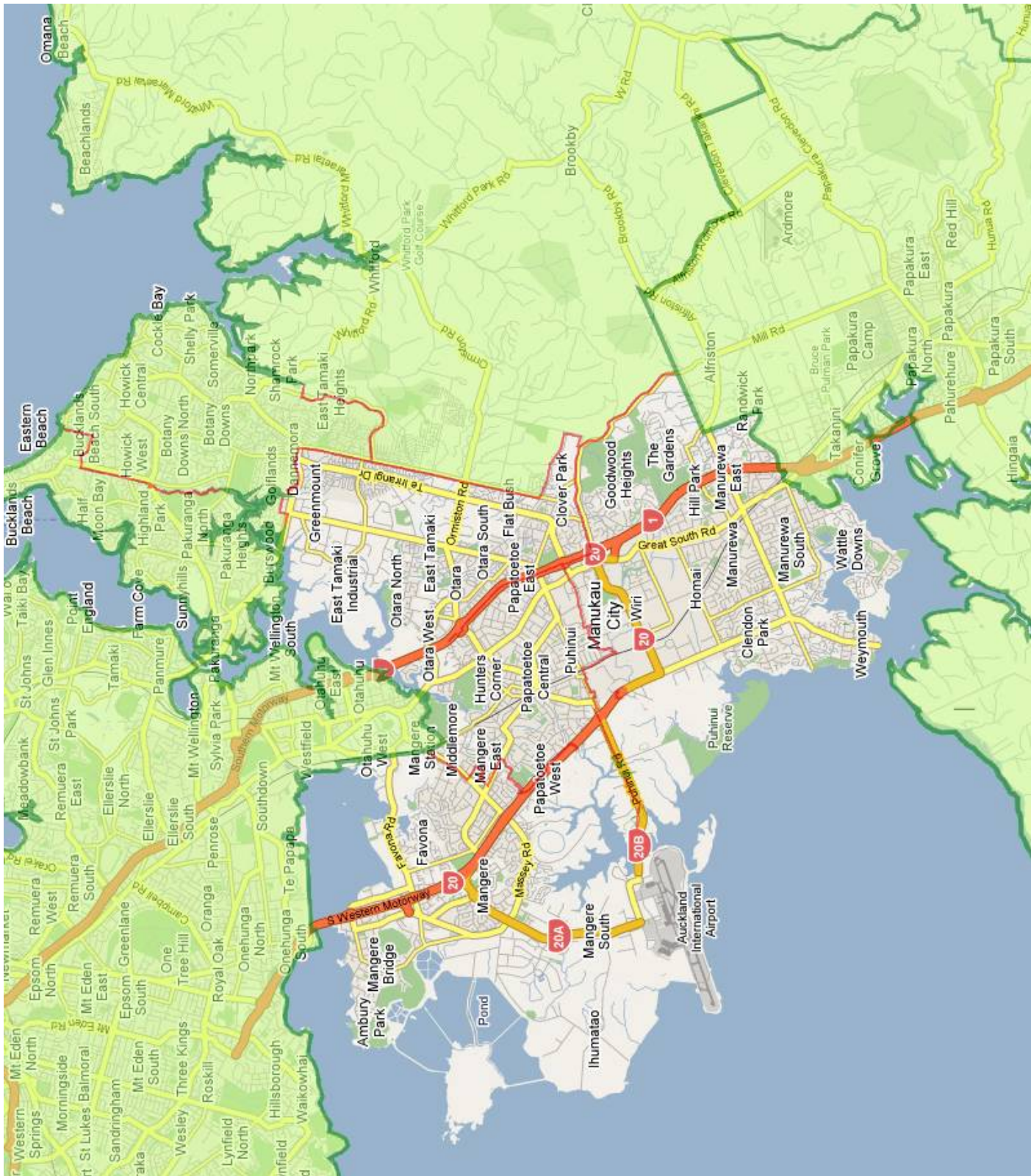
Area 'B' is treated in a separate profile, as are the remaining South Auckland Presbytery churches in the Papakura and Franklin Districts (two further profiles). A list of churches in each of these four areas is given on p3.

South Auckland 'A' presbytery area is located in:

- o Counties Manukau Police District (all of the West and Central Areas and the western part (Otara Ward) of the East Area)
- o Counties Manukau District Health Board (this DHB covers all of Manukau City, Papakura and Franklin Districts)

Map of South Auckland 'A' Presbytery area





List of parishes and their wards and Presbytery area profiles

Parish	Ward	Presbytery Profile
Mangere Pacific Islanders*	Mangere	<p style="text-align: center;">South Auckland 'A' (lower socio-economic)</p>
Mangere East St Marks Presbyterian Church*	Mangere	
Mangere Presbyterian Church*	Mangere	
Manukau Cook Islander Presbyterian Parish	Papatoetoe	
Manukau Pacific Islanders Samoan	Papatoetoe	
Manurewa St Andrews Presbyterian Church	Manurewa	
Manurewa St Pauls Presbyterian Church	Manurewa	
Otara Pacific Islanders	Otara	
Papatoetoe St Martins Presbyterian Church	Papatoetoe	
Papatoetoe St Johns & St Philips Church	Papatoetoe	

Bucklands Beach Co-operating*	Pakuranga	<p style="text-align: center;">South Auckland 'B' (higher socio-economic)</p>
Howick St Andrews Presbyterian Church*	Howick	
St Columba at Botany Presbyterian Church*	Botany Downs-Clevedon	
Clevedon Presbyterian Church of Clevedon	Botany Downs-Clevedon	
Pohutukawa Coast Presbyterian Church	Botany Downs-Clevedon	

Conifer Grove Takanini St Aidans Parish	-	<p style="text-align: center;">South Auckland Papakura</p>
Papakura Pacific Islanders	-	
Papakura & Districts First Presbyterian Church	-	
Papakura East Presbyterian Church	-	
Drury Presbyterian Parish	-	

Crossroads Christian Centre	-	<p style="text-align: center;">South Auckland Franklin</p>
Pukekohe St James Presbyterian Church	-	
Te Kauwhata St Andrews Presbyterian Church	-	
Tuakau Union Parish	-	
Waiuku and Districts Combined Churches	-	

*These churches belong to Auckland Presbytery

South Auckland 'A' Presbytery region at a glance

Some of the significant highs and lows for the Manukau City wards, comparing presbytery area South Auckland 'A', with South Auckland 'B': (very high/high in New Zealand; very low/low in New Zealand). Data is from the 2006 census.

	South Auckland 'A'				South Auckland 'B'		
	Mangere	Otara	Papatoetoe	Manurewa	Pakuranga	Howick	Botany Downs-Clevedon
Population general							
Median age in years(NZ: 35)	26.0	24.0	31.0	28.0	36.0	37.0	35.0
% of people 0-24 years old	47.61%	50.66%	39.46%	44.73%	35.66%	35.77%	36.75%
% of people 25-44 years old	27.50%	27.74%	30.70%	29.43%	28.21%	26.58%	31.06%
% of people 45-64 years old	18.08%	16.62%	19.93%	18.87%	24.42%	25.61%	24.62%
% of people 65 years old and over	6.81%	4.98%	9.90%	6.97%	11.71%	12.04%	7.57%
Work and Education							
% receiving income from wages/salary*	56.35%	56.25%	58.91%	60.63%	59.18%	60.64%	60.61%
% receiving income from self-employment*	5.64%	3.84%	8.30%	8.88%	15.42%	16.16%	19.33%
% receiving income from investments*	6.52%	3.21%	11.68%	11.76%	27.32%	28.85%	25.26%
% as full-time students*	9.95%	10.19%	9.89%	8.56%	13.14%	12.76%	11.17%
% without any educational qualification*	29.79%	32.43%	25.37%	28.41%	15.49%	13.98%	14.84%
% graduated from university*	9.56%	8.05%	15.70%	13.23%	28.12%	29.44%	28.51%
Ethnicity							
% European	19.94%	12.81%	34.13%	39.77%	57.01%	66.33%	54.88%
% Maori	17.85%	19.92%	16.01%	27.49%	6.03%	3.90%	5.60%
% Pacific Islander	61.53%	68.24%	25.77%	28.39%	4.00%	1.69%	3.71%
% Asian	11.44%	10.98%	33.01%	14.85%	30.48%	23.89%	32.27%
Family and Household							
couples with children (as % of families)	49.50%	49.57%	48.72%	46.19%	50.08%	52.19%	53.17%
couples without children (as % of families)	19.78%	16.08%	27.19%	25.97%	34.30%	33.45%	34.71%
% solo parents (as % of families with children)	38.29%	40.93%	33.09%	37.60%	23.77%	21.59%	18.53%
% who have never married/partnered*	33.53%	35.17%	30.37%	32.94%	28.16%	27.40%	26.36%
Median household income	\$55,400	\$54,300	\$49,800	\$58,600	\$65,500	\$70,800	\$79,300
Mean weekly rental for households renting	\$201	\$184	\$243	\$228	\$305	\$320	\$354
% of household income paid as rent	18.89%	17.64%	25.34%	20.25%	24.18%	23.50%	23.21%
% of households with only one occupant	11.02%	7.43%	18.94%	13.63%	15.96%	15.94%	10.93%
% of households with 6 or more people	25.25%	30.01%	11.29%	14.13%	5.46%	4.18%	6.05%
Benefits							
% receiving unemployment benefit*	6.38%	7.09%	4.64%	5.44%	2.10%	1.28%	1.79%
% receiving sickness benefit*	4.58%	5.28%	3.83%	3.55%	1.35%	1.02%	1.38%
% receiving domestic purposes benefit*	5.85%	7.48%	4.14%	6.21%	1.67%	1.19%	1.26%
% receiving New Zealand superannuation*	7.86%	5.43%	11.37%	8.66%	12.07%	12.64%	7.75%
Faith							
% Christian	62.83%	63.49%	45.61%	49.97%	47.89%	52.56%	46.18%
% Maori Christian	2.21%	3.08%	1.67%	3.34%	0.45%	0.14%	0.32%
% having no religion	11.37%	10.72%	17.18%	22.77%	32.93%	32.99%	30.83%
% following New Age/Spiritualism	0.19%	0.17%	0.26%	0.31%	0.39%	0.37%	0.32%
% Hindu	2.57%	2.41%	11.04%	4.54%	3.46%	1.95%	5.64%
% Islam	2.76%	0.87%	4.68%	1.30%	1.90%	0.98%	2.44%
% Buddhist	1.18%	1.92%	3.69%	1.99%	3.42%	2.84%	4.38%

Notes:

- Statistics with (*) are for the population aged 15 years and older
- "family" is defined as the total of couples with children plus couples without children plus solo parents
- Statistics in **bold** are highest/lowest in Manukau City wards

General Comments

Manukau City as a whole has several notable statistics, and on a ward by ward basis these distinctive characteristics become even more marked.

Manukau City has a very young population along with high population growth and density. Ethnically it is the least European, most Pacific Islander and second-most Asian territorial authority in New Zealand. It has the highest proportion of families with children, and households with six or more inhabitants, and the lowest proportion of couples without children and households with one inhabitant, of all the territorial authorities in New Zealand. It is also religiously very diverse, with high proportions of Hindus, Muslims and Buddhists.

The four wards that make up area 'A' of Manukau City, the lower socio-economic sector, illustrate this diversity within the lower socioeconomic area, but even more significantly, the strong contrast of this area with the higher socioeconomic area 'B'. On the basis of 2001 statistics, in Manukau City as a whole, an above average 49% of people lived in deprived meshblocks.¹ However, this is concentrated in area 'A' and not area 'B' as the map on p 6 demonstrates graphically².

Manukau City's low population age structure is completely due to the very low age of area 'A', particularly Mangere, Manurewa and Otara Wards, which all have median ages in the twenties. Area 'B's age structure is similar to the New Zealand average. Very few people in area 'A' have income from investment or self-employment, unlike in area 'B'. Levels of education and student numbers are around average. These figures for area 'B' are well above average.

Ethnically, area 'A' has very much less people of European descent, as low as 13% in Otara. Pacific Islanders make up a majority of the population in Otara and Mangere, with Asians as numerous as Europeans in Papatoetoe, and a significant proportion in all wards. The proportion of Maori is average, in area 'A' but very low in area 'B'. Pacific Islanders are present in average numbers in area 'B', whereas Asians make up between a quarter and a third of the population of the area 'B' wards.

Both areas have a high proportion of families with children and few couples without children. Area 'A' has many solo parents, whereas area 'B' has few. Both areas have very low proportions of people who have never married or partnered.

Household income is average in area 'A' and well above average in area 'B', particularly in Botany Downs-Clevedon. Rental is a significant proportion of income in area 'B' but less so in area 'A'. Households are very large in area 'A', noticeably less so in area 'B'. Few people live alone in either area. A very high proportion of people are on benefits in area 'A' (apart from NZ superannuation) whereas in area 'B' the proportion is much less than the national average.

Suicide and self-harm rates are about average for the counties Manukau District Health Board area but this covers a large region besides Manukau City.³ Surprisingly Manukau City has few non-casino gaming machines/head of population (32.7/10,000; 2005 statistics).⁴

Mangere and Otara wards are strongly Christian whereas Papatoetoe and Manurewa are much less so. All wards are religiously diverse, with high percentages of Hindus, Muslims and Buddhists. Notable is the figure of 11% Hindu in Papatoetoe. Area 'B' is less strongly Christian but has a similar level of religious diversity to area 'A'. Two notable statistics in this area are the figures 4.4% Buddhist and 5.6% Hindu, both in Botany Downs-Clevedon ward.

¹ NZDep2001 Index of Deprivation: A meshblock is the smallest area used for census data, typically contains around 110 people (a city block). The figure is for those living in decile 8-10 meshblocks.

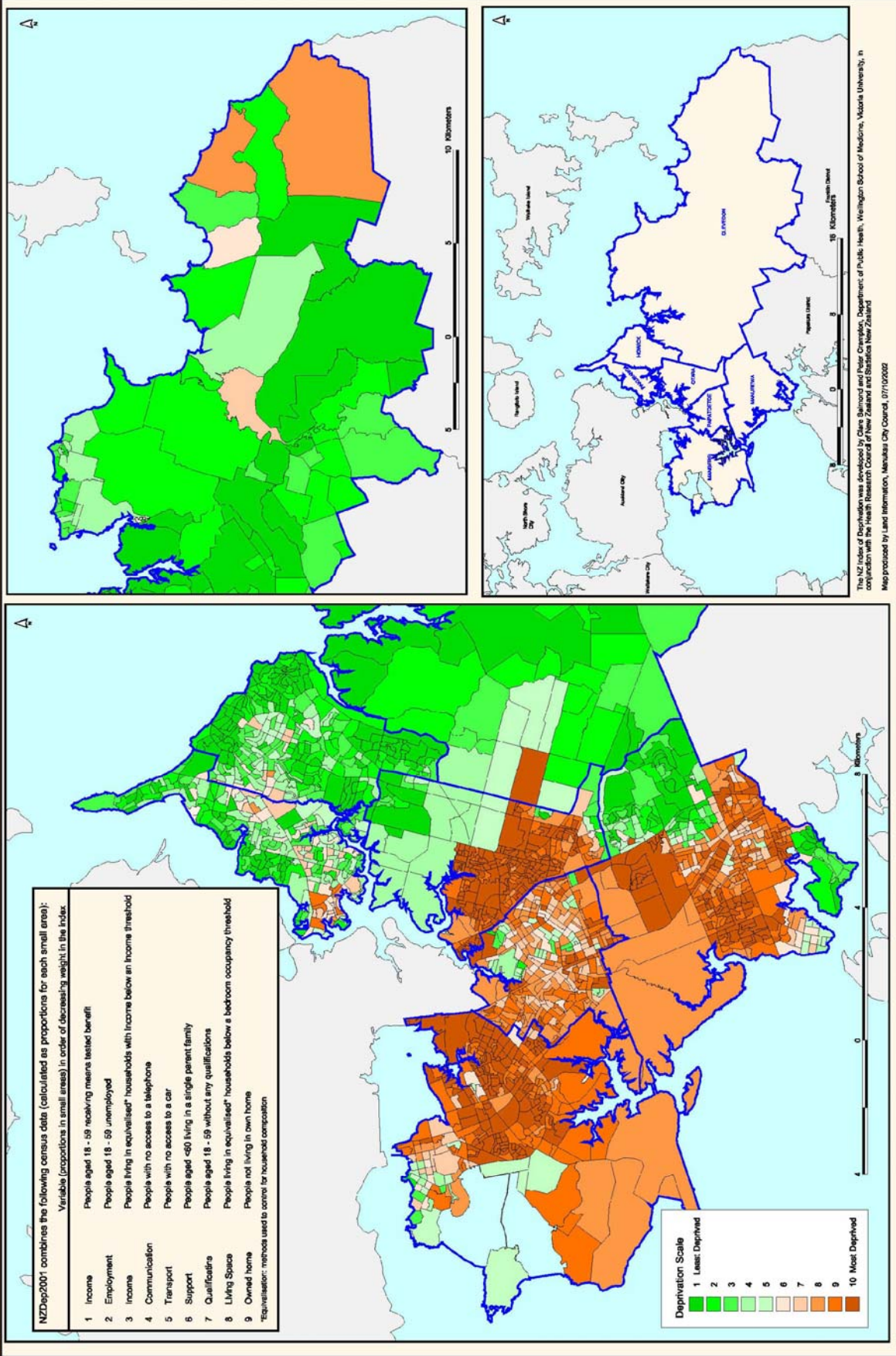
² Obtained from Manukau City website

http://www.manukau.govt.nz/uploadedFiles/manukau.govt.nz/Around_Manukau/Statistics/motm4.pdf

³ Miranda Devlin. Ministry of Health. 2006. *Suicide Facts: 2004–2005 data*.

⁴ Kylie Mason. Ministry of Health. 2006. *Problem Gambling Geography of New Zealand 2005*. Wellington: Ministry of Health.

New Zealand Index of Deprivation 2001 (NZDep2001)



Selected Statistics for South Auckland 'A' Presbytery region

Note: The same statistic for all of New Zealand is given in square brackets e.g. [NZ: 20%]

Population

At the 2006 Census of Population and Dwellings:

- o The census usually resident population count for South Auckland 'A' Presbytery region was 207,690. Manukau City (South Auckland Presbytery areas 'A' and 'B') population was 328,968, a change of 16.16% since 2001 [NZ: change = 7.8%].

Numbers of people counted

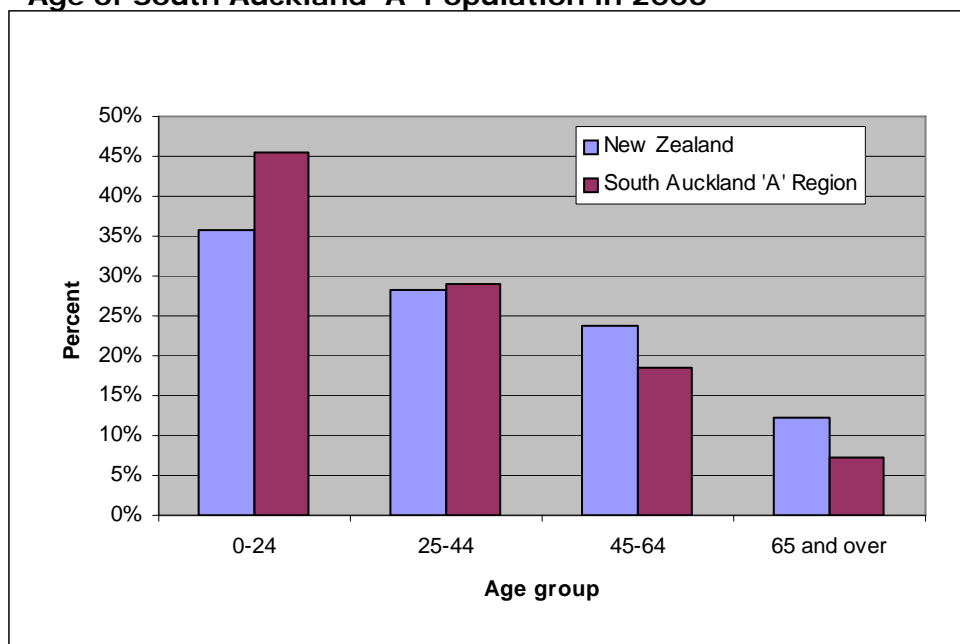
	South Auckland 'A'	New Zealand
Males	100,560	1,965,648
Females	107,133	2,062,323
Total	207,690	4,027,971

Age profile

At the 2006 Census:

- o 29.2% of people in South Auckland 'A' Presbytery region were **under 15** years old [NZ: 21.5%].
- o 7.2% of people in South Auckland 'A' Presbytery region were **over 65** years old [NZ: 12.3%].

Age of South Auckland 'A' Population in 2006



Employment

At the 2006 Census:

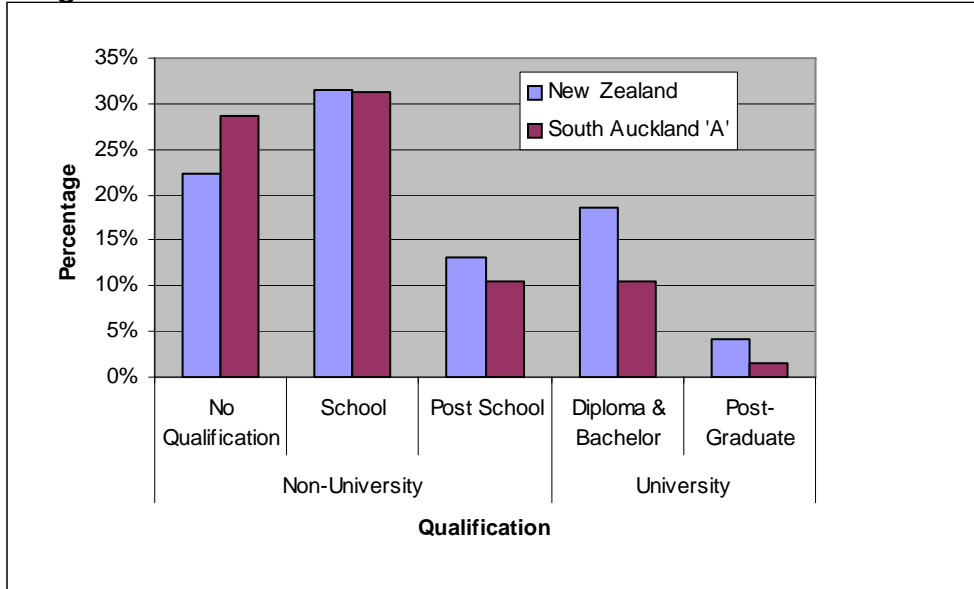
- o The **unemployment rate** in South Auckland 'A' Presbytery region was 9.0% [NZ: 5.4%].
- o The most popular occupational group in South Auckland 'A' Presbytery region was Clerical and Administrative Workers at 13.3% [NZ: professionals (18.9%)].

Education

At the 2006 Census:

- 22.5% of people aged 15 years and over in South Auckland 'A' Presbytery region had a **post-school qualification** [NZ: 35.8%].

Highest Qualification in South Auckland 'A' and NZ

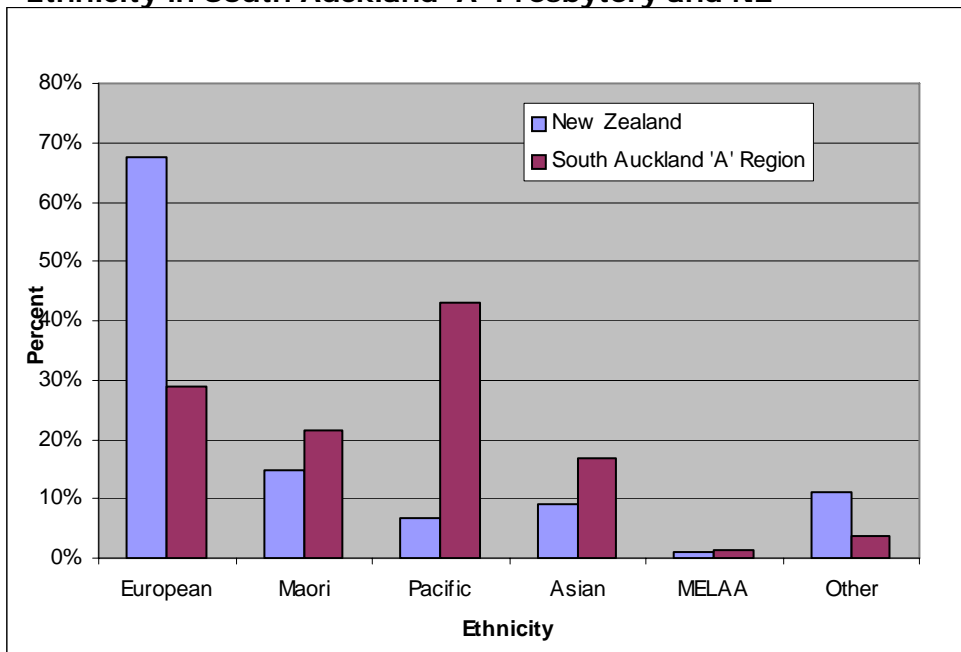


Ethnic groups

At the 2006 Census:

- 29.0% of people in South Auckland 'A' Presbytery region said they belong to the European ethnic group [NZ: 67.6%].

Ethnicity in South Auckland 'A' Presbytery and NZ



MELAA = Middle East, Latin American and African

Families

At the 2006 Census:

- o There were 49,503 families in South Auckland 'A' Presbytery region.

Family type

	South Auckland 'A'	New Zealand
Couples with child(ren)	48.1%	42.0%
Couples without children	23.1%	39.9%
1 parent with child(ren)	28.8%	18.1%

Marital Status

	South Auckland 'A'	New Zealand
Never married	32.9%	31.4%
Married (not civil union)	39.0%	44.8%
Previously married/partnered	13.3%	16.0%

'Previously married/partnered' includes separated, divorced and bereaved.

Households

At the 2006 Census, in South Auckland 'A' Presbytery region there were 54,402 households:

- o **Mean number of household members:** [NZ: 2.7]

Mangere Ward	4.2
Otara Ward	4.5
Papatoetoe Ward	3.2
Manurewa Ward	3.5

- o **access to a telephone:** 78.6% of households [NZ: 91.7%].
- o **access to the internet:** 41.4% of households [NZ: 60.5%].
- o **access to a motor vehicle:** 91.6% of households [NZ: 92.2%].
- o **mean weekly rent** for rented permanent private dwellings: [NZ: \$225]

Mangere Ward	\$201
Otara Ward	\$184
Papatoetoe Ward	\$243
Manurewa Ward	\$228

- o **ownership of dwelling** with or without a mortgage, 54.1% [NZ: 66.9%].

Income

At the 2006 Census:

- o The median family income in South Auckland 'A' Presbytery region was: [NZ: \$59,000]

Mangere Ward	\$55,400
Otara Ward	\$54,300
Papatoetoe Ward	\$49,800
Manurewa Ward	\$58,600

Family Income in South Auckland 'A' and NZ



Benefits and Allowances

The percentages of people 15 years of age and over in South Auckland 'A' Presbytery region receiving the following government benefits and allowances are:

Benefits and Allowances

	South Auckland 'A' region	New Zealand
Unemployment Benefit	5.02%	3.11%
Sickness Benefit	3.61%	2.38%
Domestic Purposes Benefit	5.12%	3.14%
Student Allowance	2.04%	2.17%

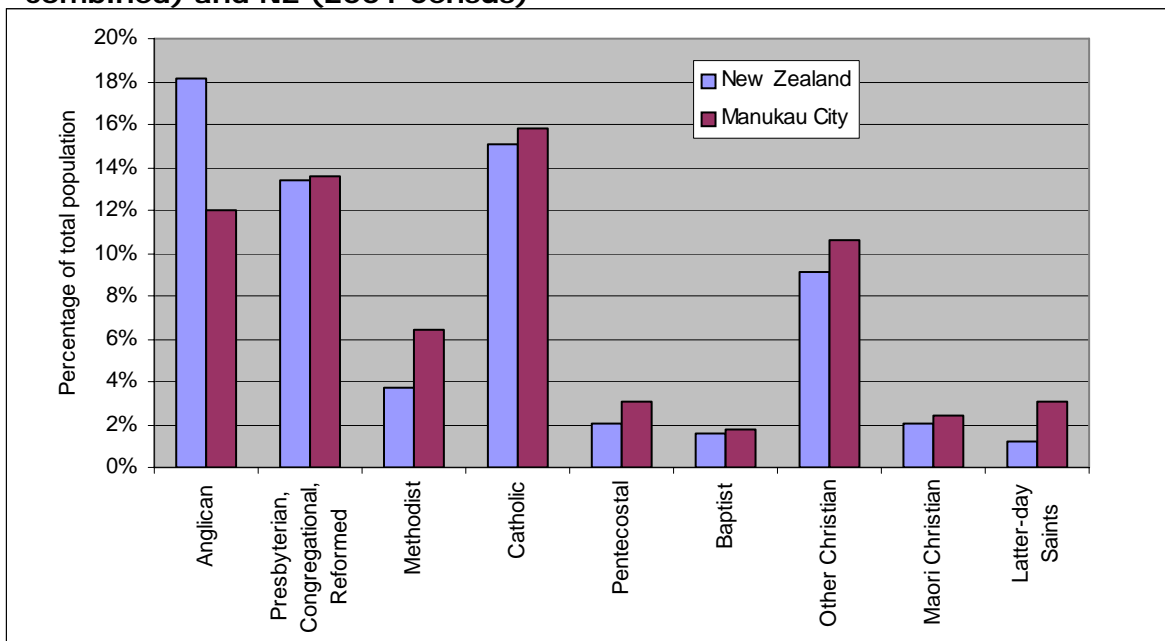
Religion

Religious Affiliation (2006 Census)

	Christian	Māori Christian	*New Age Religions	Judaism	Islam	Hindu	Buddhist	Other Religions	No Religion
New Zealand	58.03%	1.88%	0.57%	0.20%	1.03%	1.84%	1.50%	0.70%	37.13%
South Auckland 'A'	65.84%	3.21%	0.29%	0.06%	2.74%	5.94%	2.52%	2.19%	20.02%

* includes Spiritualism

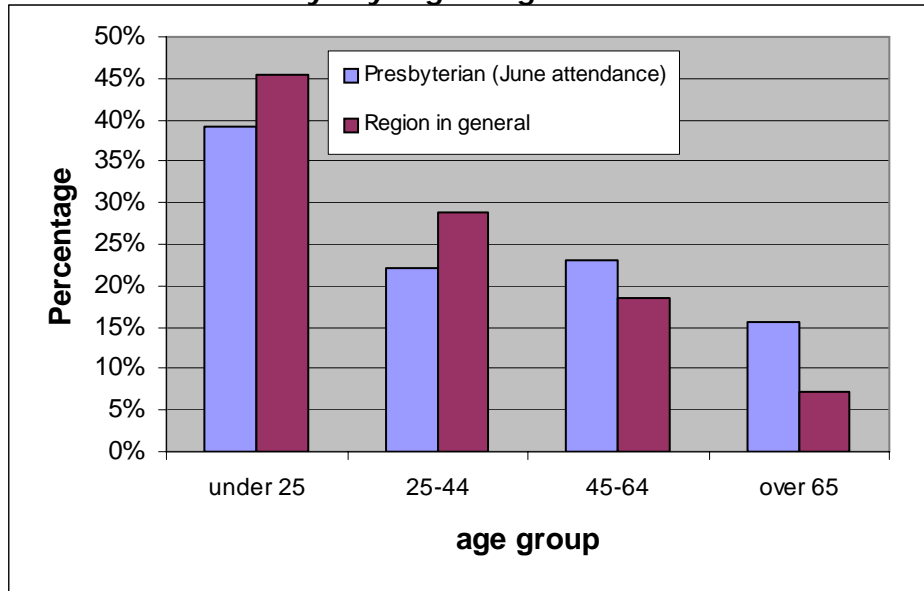
Christian Denomination in Manukau City (Presbytery areas 'A' and 'B' combined) and NZ (2001 Census)



"Other Christian" includes Church of Christ, Lutheran, Adventists, Orthodox, Evangelical non-denominational, Reformed, Uniting/Union, Salvation Army, smaller groups and Christians who did not define their denomination further

Presbyterian Church Statistics for South Auckland 'A' Presbytery

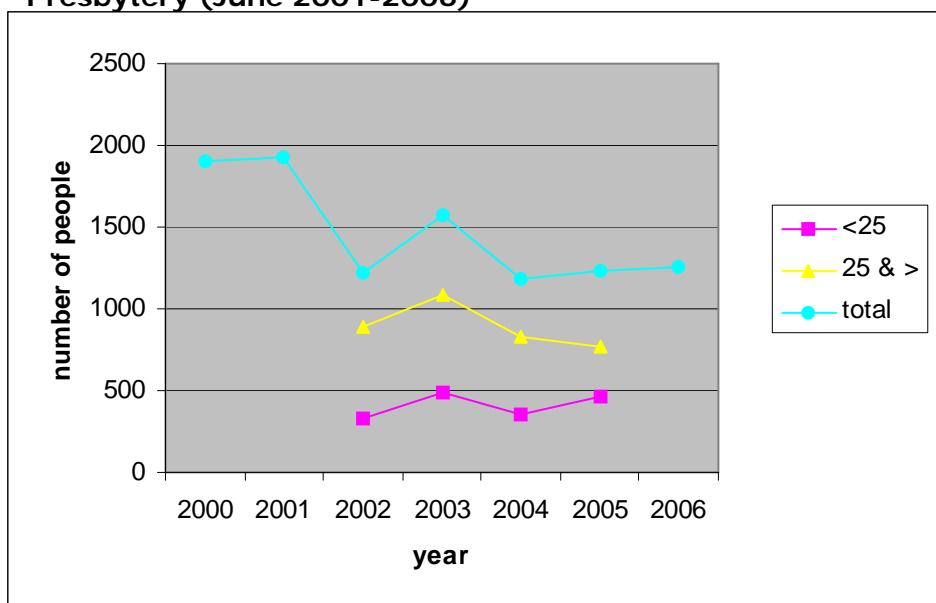
Age of those attending worship during June 2005 in South Auckland 'A' Presbytery compared with South Auckland 'A' Presbytery region age structure



Average numbers attending worship in June 2005 were 1232.

In the 2001 census, 33,066 people in Manukau City identified themselves as being Presbyterian. Presbyterian statistics record an average June worship attendance of 2,963 people in 2001 in the whole of Manukau City.

Average Worship Attendance in South Auckland 'A' Presbytery (June 2001-2006)



Age categories are different for 2000, 2001 and 2006 statistics so only the total can be given