

# Wairarapa Presbytery Community Profile

## Geography

This presbytery is equivalent to

- Wairarapa Region – made up of districts of:
  - Masterton
  - Carterton
  - South Wairarapa

It is also equivalent to

- Wairarapa Area of the Wellington Police District
- Wairarapa District Health Board

**Map of Wairarapa Presbytery**





© Campbell

# Wairarapa Presbytery region at a glance

Some of the significant highs and lows for the three districts in this presbytery compared with the 72 districts in mainland New Zealand are as follows: (**highest/high** in New Zealand; **lowest/low** in New Zealand). Data is from the 2006 census.

Population general	Masterton District	Carterton District	South Wairarapa District
Median age in years (NZ: 35)	40	41	42
% of people 0-24 years old	33.43%	31.43%	29.06%
% of people 25-44 years old	23.03%	23.91%	24.60%
% of people 45-64 years old	26.68%	<b>29.74%</b>	<b>30.07%</b>
% of people 65 years old and over	16.84%	14.96%	16.33%
Population density (people/km <sup>2</sup> ) (NZ: 9.71)	9.84	6.02	3.62
Population growth (2001-2006)	0.04%	3.64%	1.65%

## Work and Education

% receiving income from wages/salary*	56.62%	55.68%	52.92%
% receiving income from self-employment*	16.03%	22.33%	25.40%
% receiving income from investments*	25.21%	25.18%	26.48%
% as full-time students*	7.56%	7.52%	5.66%
% without any educational qualification*	29.76%	28.91%	26.29%
% graduated from university*	8.66%	9.10%	11.93%

## Ethnicity

% European	77.93%	<b>83.05%</b>	<b>80.81%</b>
% Maori	16.91%	9.92%	12.76%
% Pacific Islander	2.72%	1.57%	1.65%
% Asian	1.66%	1.18%	1.62%

## Family and Household

couples with children (as % of families)	38.51%	40.83%	37.26%
couples without children (as % of families)	43.52%	46.35%	<b>50.36%</b>
% solo parents (as % of families with children)	31.87%	24.10%	24.94%
% widowed, or bereaved civil union*	<b>7.54%</b>	6.04%	5.62%
% who have never married/partnered*	19.70%	17.06%	15.45%
Median family income	\$49,500	\$53,000	\$54,600
Mean weekly rental for households renting	\$150	\$144	\$144
% of households with 6 or more people	2.95%	2.72%	2.13%
% of households with only one occupant	<b>27.79%</b>	23.80%	<b>27.24%</b>

## Benefits

% receiving unemployment benefit*	2.24%	1.79%	2.25%
% receiving sickness benefit*	2.96%	2.41%	2.25%
% receiving domestic purposes benefit*	3.68%	2.85%	2.97%
% receiving New Zealand superannuation*	<b>20.78%</b>	18.35%	20.10%

## Faith

% Christian	54.53%	53.89%	53.44%
% Maori Christian	1.86%	0.68%	1.18%
% having no religion	31.61%	32.84%	31.82%
% following New Age/Spiritualism	0.48%	0.51%	0.47%
% Hindu	0.28%	0.25%	0.34%
% Islam	0.09%	0.25%	0.07%
% Buddhist	0.40%	0.42%	0.34%

Notes:

- Statistics with (\*) are for the population aged 15 years and older
- "family" is defined as the total of couples with children plus couples without children plus solo parents
- Statistics in **bold** are 2<sup>nd</sup> highest/2<sup>nd</sup> lowest in New Zealand

## General Comments

Wairarapa Presbytery is principally rural, with one larger town (Masterton) and several smaller urban centres. It is relatively strongly European, with an average proportion of Maori but much less of other ethnicities. Education levels are below average. Couples without children are common, as are people previously married (which includes separated and bereaved people), whereas couples with children and solo parents are uncommon, as are unmarriages. Numbers per household are lower than average, as are rentals and family incomes. Dependence on welfare benefits is about average.

On a district basis, Masterton District is the youngest and most ethnically diverse of the three. It has a high proportion of bereaved people, NZ Superannuitants and households with only one occupant. It has the lowest household income of the three districts. Carterton District's population is older, and a high proportion is of European ethnicity. South Wairarapa District's population is older still, and also very European. It has the highest proportion of couples without children and the lowest of unmarriages. Households with one occupant are common.

Wairarapa has the dubious distinction of being the region with the highest suicide rate in New Zealand (23.9/100,000 people – the NZ average is 13). It also has a relatively high rate of admissions for self-harm (191/100,000 – the NZ average is 153).<sup>1</sup>

South Wairarapa District has a relatively high number of non-casino gaming machines (77/10,000 people), whereas Masterton (53) and Carterton (56) districts have less.<sup>2</sup>

Levels of deprivation are below average in two of the three districts, with less than 30% living in the upper three deciles of deprived meshblocks (Carterton, 15%; South Wairarapa 18%). Masterton (31%) is around average<sup>3</sup>.

The presbytery has few followers of non-Christian faiths, and a relatively strong Christian presence. Figures from the 2001 census show predominance of Anglicans but also above average percentages of Presbyterians also. Presbyterian statistics over the period 2000-2006 show fluctuating but stable attendance, and an older age profile of congregations compared with that of the surrounding presbytery population.

---

<sup>1</sup> Miranda Devlin. Ministry of Health. 2006. *Suicide Facts: 2004–2005 data*.

Wellington. Suicide statistics are averaged over the years 2002-2004, self-harm statistics are for 2005.

<sup>2</sup> Kylie Mason. Ministry of Health. 2006. *Problem Gambling Geography of New Zealand 2005*. Wellington: Ministry of Health.

<sup>3</sup> NZDep2001 Index of Deprivation: A meshblock is the smallest area used for census data, typically contains around 110 people (a city block). The figure is for those living in decile 8-10 meshblocks.

# Selected Statistics for Wairarapa Presbytery region

Note: The same statistic for all of New Zealand is given in square brackets e.g. [NZ: 20%]

## Population

At the 2006 Census of Population and Dwellings:

- o The census usually resident population count for Wairarapa Presbytery region was 38,610, a change of 1.04% since 2001 [NZ: change = 7.8%].

## Numbers of people counted

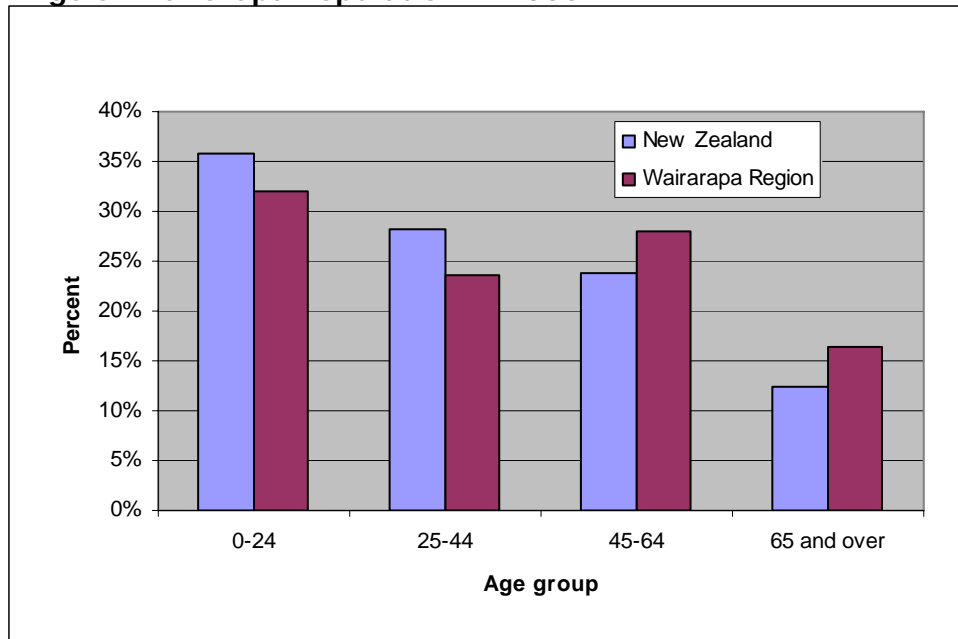
	Wairarapa	New Zealand
<b>Males</b>	18,792	1,965,648
<b>Females</b>	19,827	2,062,323
<b>Total</b>	38,610	4,027,971

## Age profile

At the 2006 Census:

- o 21.1% of people in Wairarapa Presbytery region were **under 15** years old [NZ: 21.5%].
- o 16.4% of people in Wairarapa Presbytery region were **over 65** years old [NZ: 12.3%].

**Age of Wairarapa Population in 2006**



## Employment

At the 2006 Census:

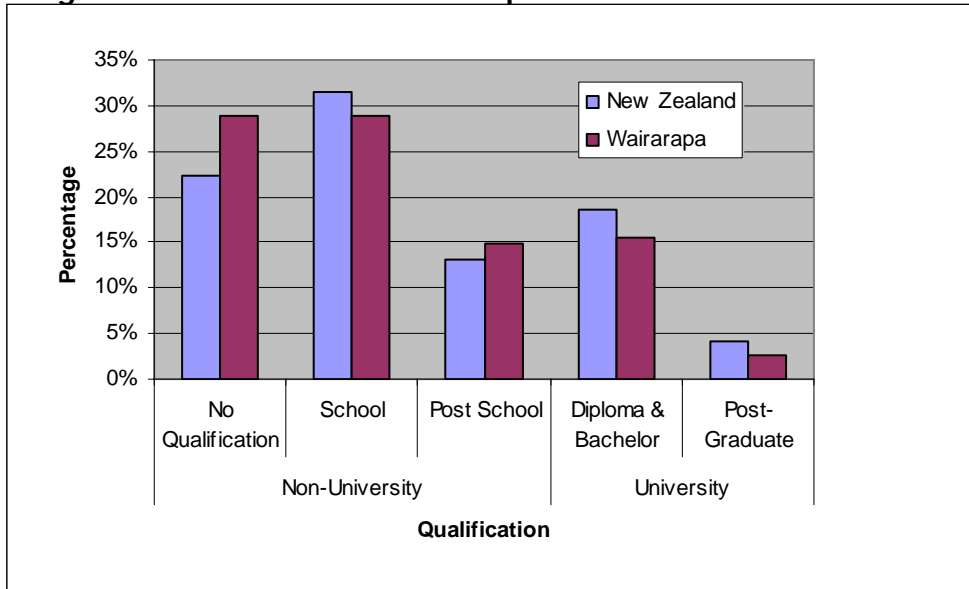
- o The **unemployment rate** in Wairarapa Presbytery region was 4.1% [NZ: 5.4%].
- o The most popular occupational group in Wairarapa Presbytery region was Managers at 18.9% [NZ: professionals (18.9%)].

## Education

At the 2006 Census:

- 33.1% of people aged 15 years and over in Wairarapa Presbytery region had a **post-school qualification** [NZ: 35.8%].

**Highest Qualification in Wairarapa and NZ**

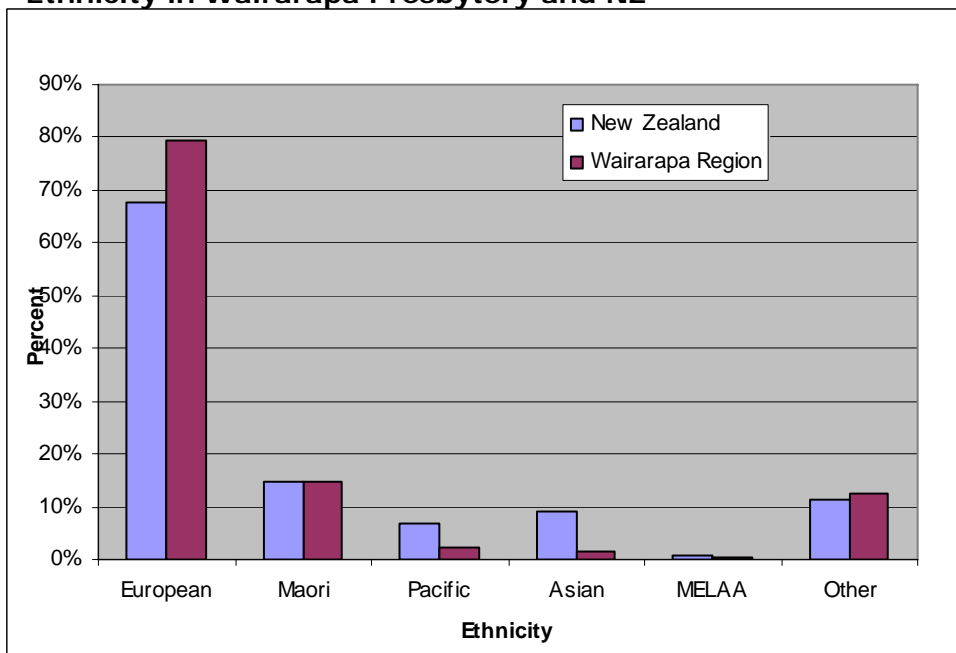


## Ethnic groups

At the 2006 Census:

- 79.5% of people in Wairarapa Presbytery region said they belong to the European ethnic group [NZ: 67.6%].

**Ethnicity in Wairarapa Presbytery and NZ**



MELAA = Middle East, Latin American and African

## Families

At the 2006 Census:

- There were 10,710 families in Wairarapa Presbytery region.

## Family type

	Wairarapa	New Zealand
<b>Couples with child(ren)</b>	38.7%	42.0%
<b>Couples without children</b>	45.7%	39.9%
<b>1 parent with child(ren)</b>	15.7%	18.1%

## Marital Status

	Wairarapa	New Zealand
<b>Never married</b>	25.8%	31.4%
<b>Married (not civil union)</b>	48.8%	44.8%
<b>Previously married/partnered</b>	19.2%	16.0%

'Previously married/partnered' includes separated, divorced and bereaved.

## Households

At the 2006 Census, in Wairarapa Presbytery region there were 15,270 households:

- **Mean number of household members:** [NZ: 2.7]

Masterton District	2.4
Carterton District	2.5
South Wairarapa District	2.4

- **access to a telephone:** 88.0% of households [NZ: 91.7%].
- **access to the internet:** 52.8% of households [NZ: 60.5%].
- **access to a motor vehicle:** 91.8% of households [NZ: 92.2%].
- **mean weekly rent** for rented permanent private dwellings: [NZ: \$225]

Masterton District	\$150
Carterton District	\$144
South Wairarapa District	\$144

- **ownership of dwelling** with or without a mortgage, 72.3% [NZ: 66.9%].

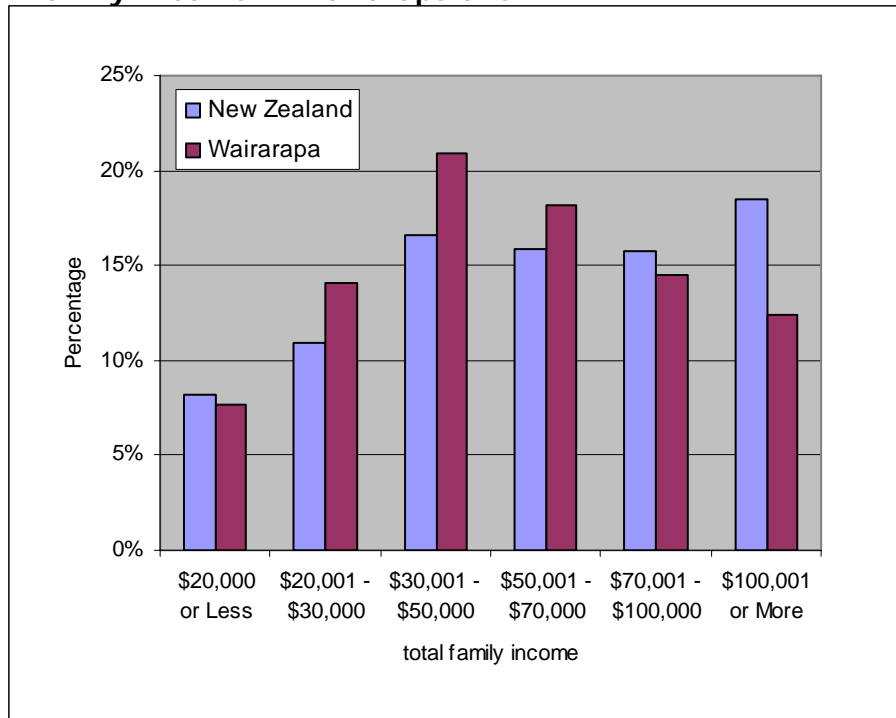
## Income

At the 2006 Census:

- o The median family income in Wairarapa Presbytery region was: [NZ: \$59,000]

Masterton District	\$49,500
Carterton District	\$53,000
South Wairarapa District	\$54,600

**Family Income in Wairarapa and NZ**



## Benefits and Allowances

The percentages of people 15 years of age and over in Wairarapa Presbytery region receiving the following government benefits and allowances are:

### Benefits and Allowances

	Wairarapa region	New Zealand
Unemployment Benefit	2.07%	3.11%
Sickness Benefit	2.58%	2.38%
Domestic Purposes Benefit	3.22%	3.14%
Student Allowance	0.97%	2.17%

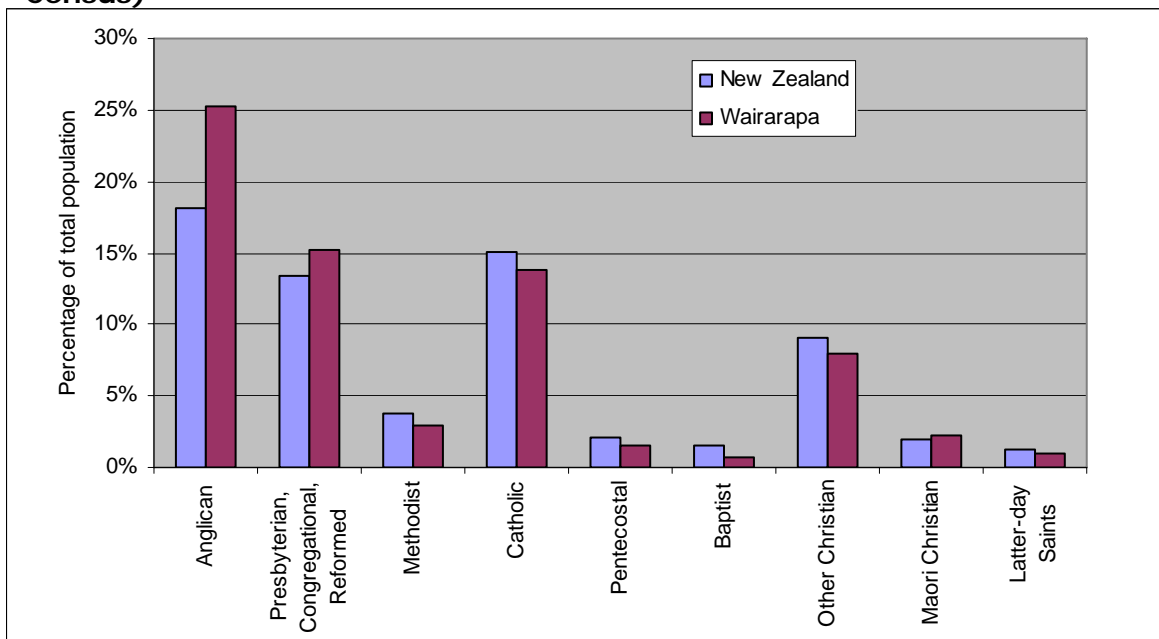
## Religion

### Religious Affiliation (2006 Census)

	Christian	Māori Christian	*New Age Religions	Judaism	Islam	Hindu	Buddhist	Other Religions	No Religion
New Zealand	58.03%	1.88%	0.57%	0.20%	1.03%	1.84%	1.50%	0.70%	37.13%
Wairarapa	62.24%	1.71%	0.55%	0.14%	0.13%	0.33%	0.45%	0.46%	36.64%

\* includes Spiritualism

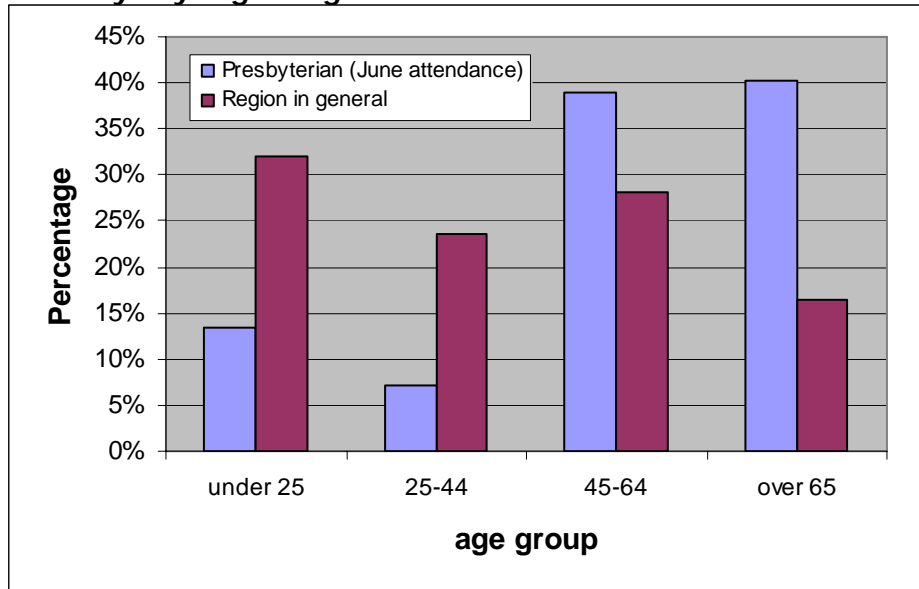
### Christian Denomination in Wairarapa Presbytery region and NZ (2001 Census)



“Other Christian” includes Church of Christ, Lutheran, Adventists, Orthodox, Evangelical non-denominational, Reformed, Uniting/Union, Salvation Army, smaller groups and Christians who did not define their denomination further

# Presbyterian Church Statistics for Wairarapa Presbytery

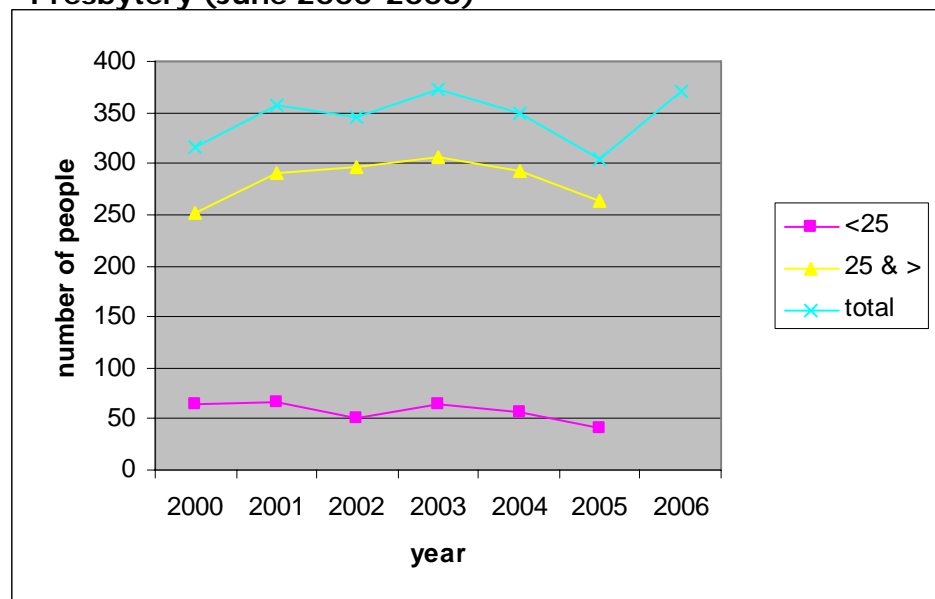
**Age of those attending worship during June 2005 in Wairarapa Presbytery compared with Wairarapa Presbytery region age structure**



Average numbers attending worship in June 2005 were 305.

In the 2001 census, 5,142 people in Wairarapa Presbytery region identified themselves as being Presbyterian. Presbyterian statistics record an average June worship attendance of 357 people in 2001 in the whole of Wairarapa Presbytery.

**Average Worship Attendance in Wairarapa Presbytery (June 2000-2006)**



Age categories for 2006 were changed so only the total is given