

West Coast Presbytery Community Profile

Geography

This presbytery is equivalent to

- West Coast Region – made up of districts of:
 - Buller
 - Grey
 - Westland

It is also equivalent to

- Tasman Police District area of West Coast
- West Coast District Health Board

Map of West Coast Presbytery





West Coast Presbytery region at a glance

Some of the significant highs and lows for the three districts in this presbytery compared with the 72 districts in mainland New Zealand are as follows: (**highest/high** in New Zealand; **lowest/low** in New Zealand). Data is from the 2006 census.

Population general	Buller District	Grey District	Westland District
Median age in years (NZ: 35)	42	38	39
% of people 0-24 years old	29.68%	33.04%	30.27%
% of people 25-44 years old	24.89%	26.84%	28.81%
% of people 45-64 years old	29.81%	26.64%	28.60%
% of people 65 years old and over	15.62%	13.48%	12.32%
Population density (people/km ²) (NZ: 9.71)	1.22	3.76	0.71
Population growth (2001-2006)	0.81%	2.54%	8.10%

Work and Education

% receiving income from wages/salary*	54.58%	60.48%	60.98%
% receiving income from self-employment*	16.80%	16.19%	22.75%
% receiving income from investments*	17.08%	18.84%	22.65%
% as full-time students*	4.99%	6.19%	5.17%
% without any educational qualification*	35.05%	32.97%	27.18%
% graduated from university*	5.24%	6.69%	8.15%

Ethnicity

% European	81.06%	79.81%	77.71%
% Maori	8.57%	8.52%	12.79%
% Pacific Islander	0.67%	1.14%	0.87%
% Asian	0.80%	1.16%	1.51%

Family and Household

couples with children (as % of families)	35.53%	40.57%	39.47%
couples without children (as % of families)	48.01%	43.07%	48.12%
% solo parents (as % of families with children)	31.81%	28.74%	23.92%
% widowed, or bereaved civil union*	6.08%	5.76%	4.63%
% who have never married/partnered*	17.92%	20.32%	20.31%
Median family income	\$42,000	\$51,600	\$53,300
Mean weekly rental for households renting	\$126	\$147	\$160
% of households with 6 or more people	2.11%	2.24%	2.46%
% of households with only one occupant	31.11%	27.87%	27.71%

Benefits

% receiving unemployment benefit*	6.53%	3.20%	3.51%
% receiving sickness benefit*	2.92%	2.32%	1.95%
% receiving domestic purposes benefit*	3.90%	3.17%	2.24%
% receiving New Zealand superannuation*	20.37%	17.00%	14.71%

Faith

% Christian	46.26%	53.48%	51.05%
% Maori Christian	0.53%	0.25%	0.50%
% having no religion	37.82%	34.38%	31.95%
% following New Age/Spiritualism	0.59%	0.57%	0.39%
% Hindu	0.09%	0.23%	0.36%
% Islam	0.12%	0.16%	0.21%
% Buddhist	0.43%	0.41%	0.50%

Notes:

- Statistics with (*) are for the population aged 15 years and older
- "family" is defined as the total of couples with children plus couples without children plus solo parents
- Statistics in **bold** are 2nd highest/2nd lowest in New Zealand

General Comments

West Coast Presbytery is a combination of rural and wilderness, with several towns. Overall, this presbytery, which is also equivalent to West Coast Region, has an aging population and little population growth since the 2001 census. It is predominantly European, with a below average proportion of Maori and even less of other ethnicities. Education levels are well below average. Couples without children are common, whereas couples with children and solo parents are less common. Numbers per household are well below average, as are rentals. Family income is also below average. Dependence on welfare benefits is about average.

At a district level, Buller District population statistics depart the most from the New Zealand average. It has the oldest age profile and is the least ethnically diverse of the three districts. Many people have no educational qualification and there are few full-time students over 15 years, and few university graduates. Incomes are low, as are rentals. The proportion of households with only one occupant is the highest in New Zealand. Numbers receiving the unemployment benefit are high.

Grey and Westland District populations are more average. Westland is particularly sparsely populated. Many households have just one occupant. Lower than average percentages of people in Westland receive welfare benefits.

Suicide rates in the West Coast District Health Board region are average for New Zealand (13.8/100,000 people – the NZ average is 13). Admissions for self-harm are above average (191/100,000 – the NZ average is 153).¹

All three districts have high numbers of non-casino gaming machines (Buller, 110/10,000; Grey, 110/10,000; Westland, 89/10,000 people). The New Zealand average is 53.3.²

Levels of deprivation are significantly above average in Buller, which has 56% of people living in the upper three deciles of deprived meshblocks. Grey is about average, with 33% and Westland below average with 21%.³

The presbytery has few followers of non-Christian faiths, but the percentage of Christians is average. Buller District has less Christian and more non-religious people. Figures from the 2001 census show the West Coast presbytery to be strongly Catholic, with an above average Anglican presence also. The percentage of Presbyterians is below average. Presbyterian statistics over the period 2000-2006 show fluctuating attendance, but a possible increase over this time. The age profile of congregations is very old, particularly in the over 65 year age bracket, compared with that of the surrounding presbytery population.

¹ Miranda Devlin. Ministry of Health. 2006. *Suicide Facts: 2004–2005 data*.

Wellington. Suicide statistics are averaged over the years 2002-2004, self-harm statistics are for 2005.

² Kylie Mason. Ministry of Health. 2006. *Problem Gambling Geography of New Zealand 2005*. Wellington: Ministry of Health.

³ ³ NZDep2001 Index of Deprivation: A meshblock is the smallest area used for census data, typically contains around 110 people (a city block). The figure is for those living in decile 8-10 meshblocks.

Selected Statistics for West Coast Presbytery region

Note: The same statistic for all of New Zealand is given in square brackets e.g. [NZ: 20%]

Population

At the 2006 Census of Population and Dwellings:

- o The census usually resident population count for West Coast Presbytery region was 31,332, a change of 3.44% since 2001 [NZ: change = 7.8%].

Numbers of people counted

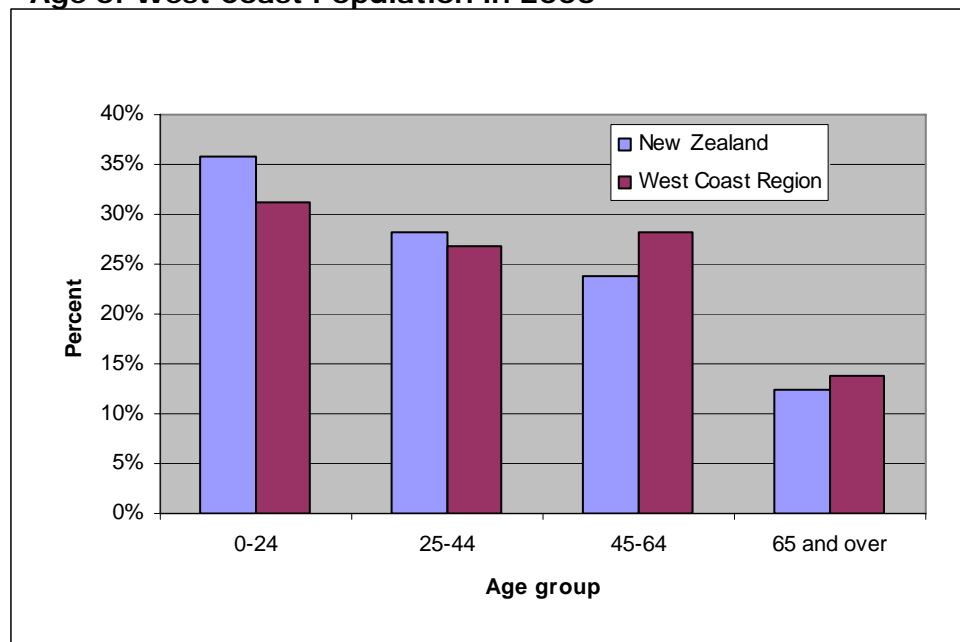
	West Coast	New Zealand
Males	15,911	1,965,648
Females	15,419	2,062,323
Total	31,332	4,027,971

Age profile

At the 2006 Census:

- o 20.4% of people in West Coast Presbytery region were **under 15** years old [NZ: 21.5%].
- o 13.8% of people in West Coast Presbytery region were **over 65** years old [NZ: 12.3%].

Age of West Coast Population in 2006



Employment

At the 2006 Census:

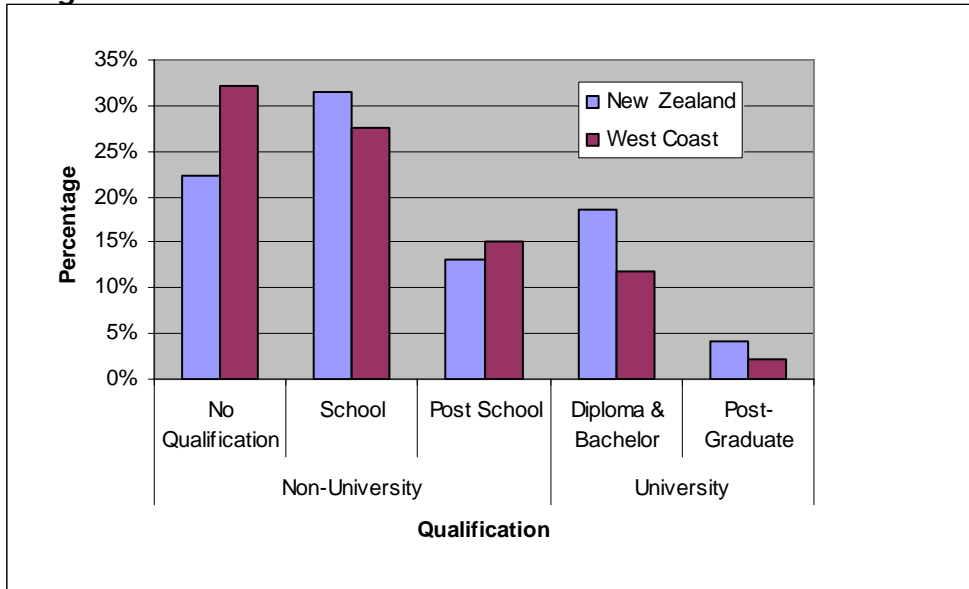
- o The **unemployment rate** in West Coast Presbytery region was 3.2% [NZ: 5.4%].
- o The most popular occupational group in West Coast Presbytery region was Managers at 17.6% [NZ: professionals (18.9%)].

Education

At the 2006 Census:

- 28.9% of people aged 15 years and over in West Coast Presbytery region had a **post-school qualification** [NZ: 35.8%].

Highest Qualification in West Coast and NZ

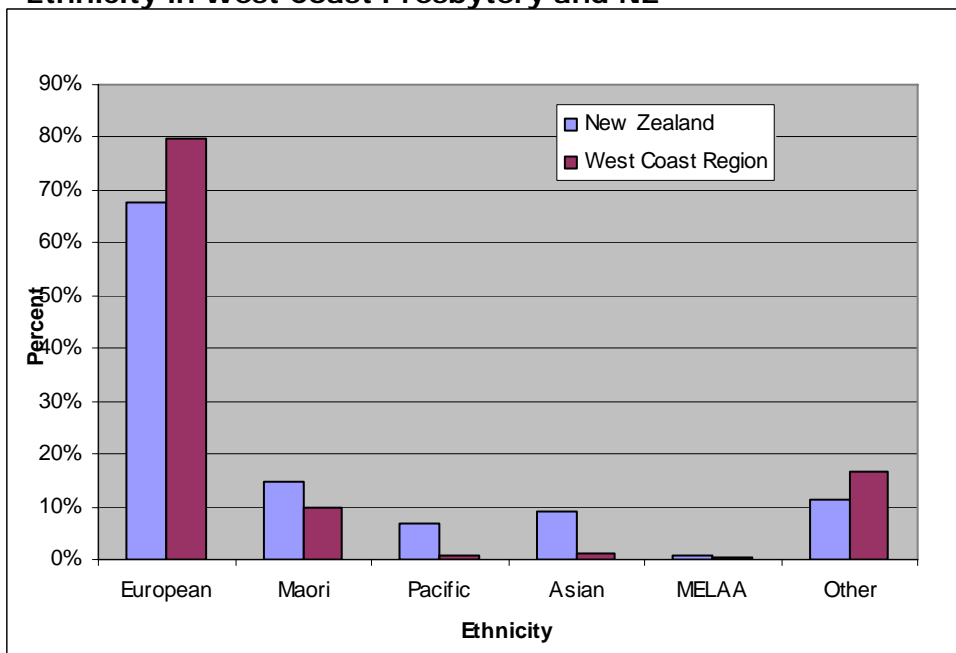


Ethnic groups

At the 2006 Census:

- 79.7% of people in West Coast Presbytery region said they belong to the European ethnic group [NZ: 67.6%].

Ethnicity in West Coast Presbytery and NZ



MELAA = Middle East, Latin American and African

Families

At the 2006 Census:

- There were 8,283 families in West Coast Presbytery region.

Family type

	West Coast	New Zealand
Couples with child(ren)	38.6%	42.0%
Couples without children	46.2%	39.9%
1 parent with child(ren)	15.1%	18.1%

Marital Status

	West Coast	New Zealand
Never married	28.9%	31.4%
Married (not civil union)	44.5%	44.8%
Previously married/partnered	18.7%	16.0%

'Previously married/partnered' includes separated, divorced and bereaved.

Households

At the 2006 Census, in West Coast Presbytery region there were 12,474 households:

- **Mean number of household members:** [NZ: 2.7]

Buller District	2.3
Grey District	2.4
Westland District	2.4

- **access to a telephone:** 83.9% of households [NZ: 91.7%].
- **access to the internet:** 47.7% of households [NZ: 60.5%].
- **access to a motor vehicle:** 92.1% of households [NZ: 92.2%].
- **mean weekly rent** for rented permanent private dwellings: [NZ: \$225]

Buller District	\$126
Grey District	\$147
Westland District	\$160

- **ownership of dwelling** with or without a mortgage, 69.2% [NZ: 66.9%].

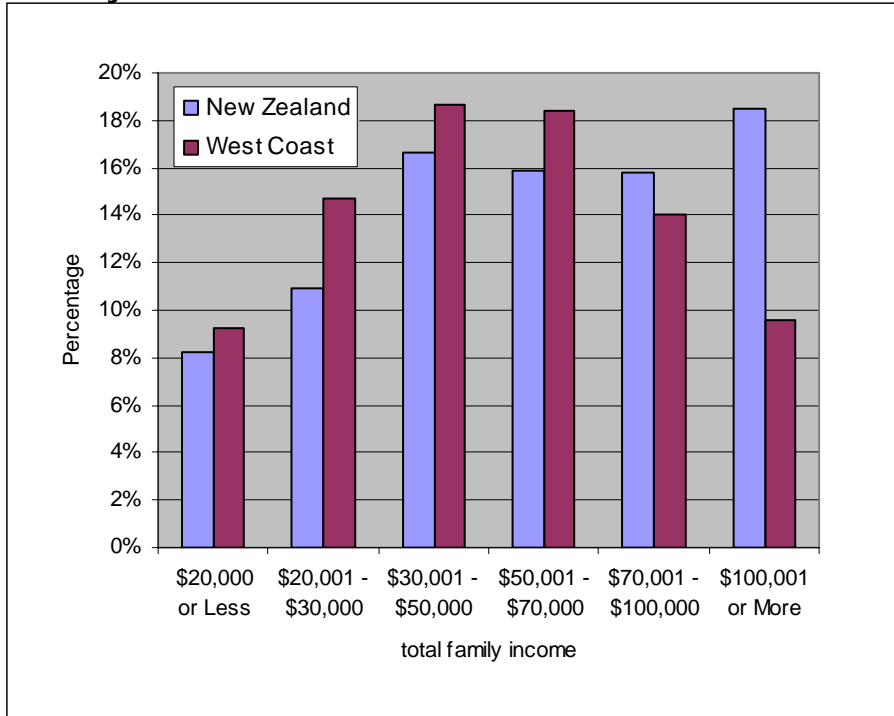
Income

At the 2006 Census:

- The median family income in West Coast Presbytery region was: [NZ: \$59,000]

Buller District	\$42,000
Grey District	\$51,600
Westland District	\$53,300

Family Income in West Coast and NZ



Benefits and Allowances

The percentages of people 15 years of age and over in West Coast Presbytery region receiving the following government benefits and allowances are:

Benefits and Allowances

	West Coast region	New Zealand
Unemployment Benefit	3.95%	3.11%
Sickness Benefit	2.29%	2.38%
Domestic Purposes Benefit	2.93%	3.14%
Student Allowance	0.88%	2.17%

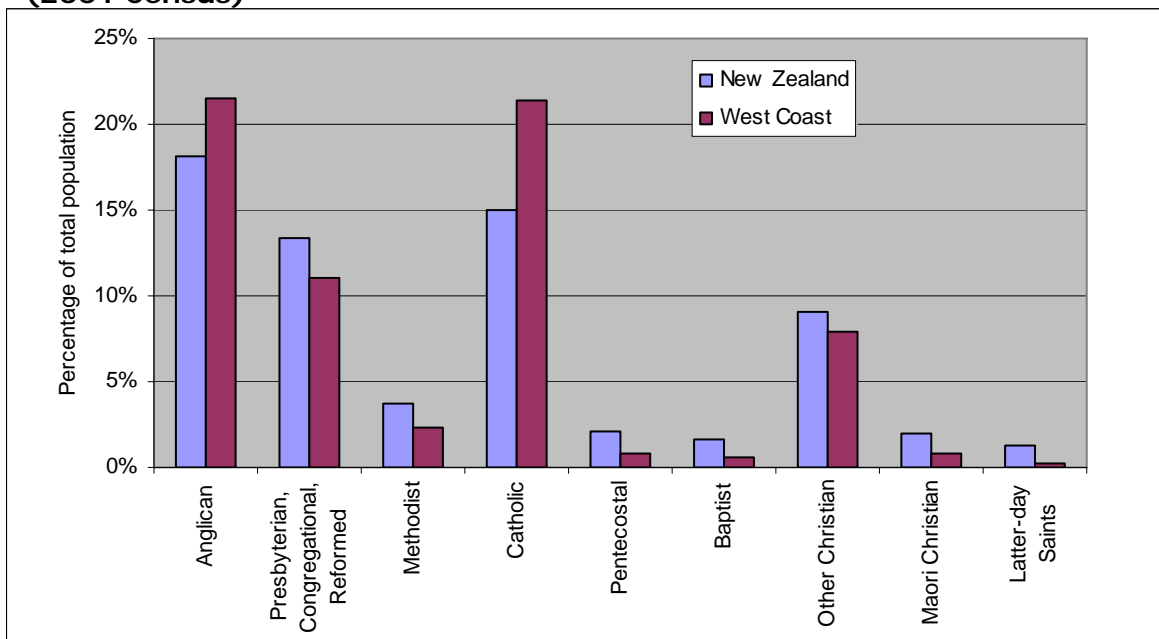
Religion

Religious Affiliation (2006 Census)

	Christian	Māori Christian	*New Age Religions	Judaism	Islam	Hindu	Buddhist	Other Religions	No Religion
New Zealand	58.03%	1.88%	0.57%	0.20%	1.03%	1.84%	1.50%	0.70%	37.13%
West Coast	59.25%	0.48%	0.57%	0.18%	0.12%	0.30%	0.51%	0.30%	40.76%

* includes Spiritualism

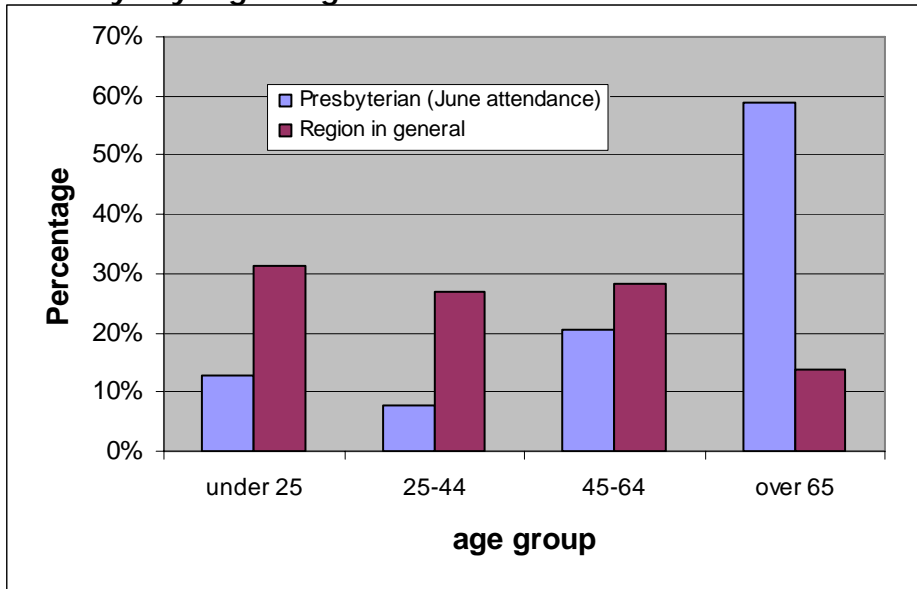
Christian Denomination in West Coast Presbytery region and NZ (2001 Census)



"**Other Christian**" includes Church of Christ, Lutheran, Adventists, Orthodox, Evangelical non-denominational, Reformed, Uniting/Union, Salvation Army, smaller groups and Christians who did not define their denomination further

Presbyterian Church Statistics for West Coast Presbytery

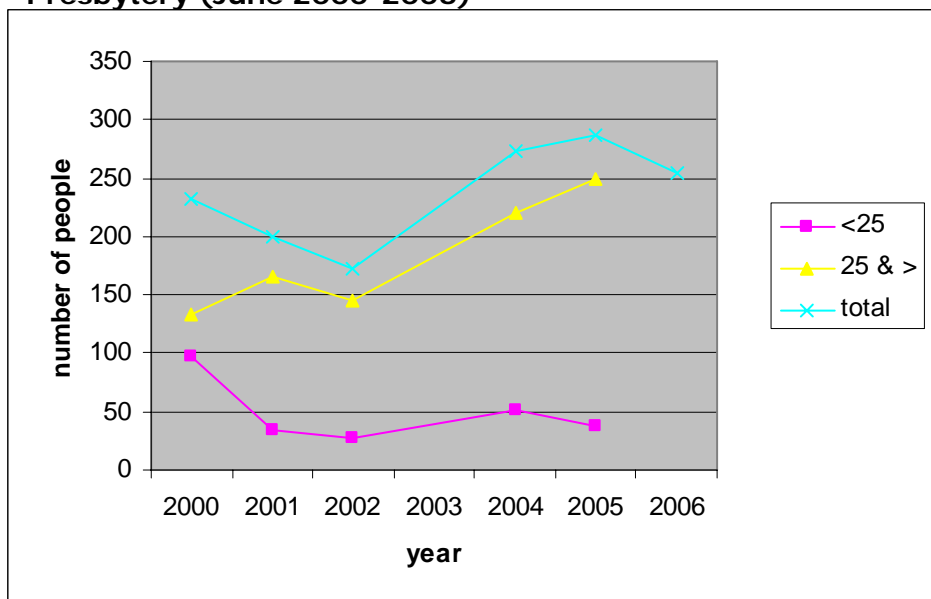
Age of those attending worship during June 2005 in West Coast Presbytery compared with West Coast Presbytery region age structure



Average numbers attending worship in June 2005 were 286.

In the 2001 census, 2,895 people in West Coast Presbytery region identified themselves as being Presbyterian. Presbyterian statistics record an average June worship attendance of 199 people in 2001 in the whole of West Coast Presbytery.

Average Worship Attendance in West Coast Presbytery (June 2000-2006)



Statistics for 2003 appear to be too high (total attendance 445) so are not included. Age categories for 2006 have changed so only the total is given.