

TREASURERS' NEWS

The latest news for Presbyterian & Cooperating Venture parishes

Highlights This Issue

**Ministers Stipend
and Allowances
from 1 July 2020**

New mileage rates

**Convert to Xero -
treasurer feedback**

**Consolidation
update**

**ANZ - phasing out
cheques**

Treasurers' News

Sandra Kennerley

Finance Manager

Presbyterian Church of Aotearoa NZ

275 Cuba St, Wellington 6141

www.presbyterian.org.nz



Welcome to the August edition

For many of us, August is a continuation of the busy period, where the focus is on finalising our annual accounts. We would like to thank the many treasurers who have provided us with their year end trial balances. This is a huge help to us and we are very thankful.

From Assembly Office, we have also recently sent out the annual ministers stipend adjustment. More about this is included below...

cont'd p.2



Minister stipend and allowances from 1 July 2020

Please [click here](#) for the new ministers stipend and allowances rates for the year from 1 June 2020.

The Council of Assembly delayed the stipend adjustments until the Labour Cost Index rates for the year to June 2020 were released. These are now available and have been used as the basis for the calculation. All changes will need to be backdated to 1 July 2020. Please note that the annual ministers stipend adjustment is required by the Book of Order: [6.051]; that the basic stipend be Average Weekly Earnings Wage Index adjusted each year from 1 July 2008.

MILEAGE + RATES

For updated mileage rates
provided by the Interchurch Bureau

[CLICK HERE](#)



Presbyterian Church
of Aotearoa New Zealand

Converting to A treasurer's feedback

xero

Over the past year, we have been asking parishes to shift to Xero. There are many reasons for this, including ease of use for treasurer's, but also advantages for us at National Office as it speeds up our work for the consolidation of our annual accounts. We know that for many, the idea of changing your accounting system is daunting – and we understand this, so wanted to share with you feedback we have received from one parish who are now converted Xero users.

"I moved to Raumati Beach in April 2019 to stay with my daughter while my new house was built. I had attended a service at Kapiti Uniting Parish (KUP) some years ago and felt that it was a very welcoming, friendly and caring Church where I would be most happy to be a member. Later that year the call went out for a new treasurer and I volunteered for the position. I had worked in Chartered Accountancy many years ago and also had a Massey Diploma in Business Studies (Accounting endorsement).

Initially I had the guidance of the retiring treasurer, who was always available to explain anything about the specifics of church accounting that I was unsure of. However, eventually the day came and I was on my own!

In February of this year we had a major problem with our accounting software and it became obvious that some decision was needed about our future needs.

I investigated the software programs available and finally decided to go with the Xero package offered by the Presbyterian Church.

It is extremely good value for money (which appealed to my Presbyterian upbringing). The modest monthly charge is well within the budget of even small congregations.

Martyn Vincent, Presbyterian Church Treasurers Support, has been absolutely fantastic with the help he has given our parish. I can't sing his praises loudly enough. Thank you Martyn for being so patient and helpful to me.

"Our end of year reports were well received by the parish members and they felt that the information provided painted a detailed and very clear picture of our financial health.

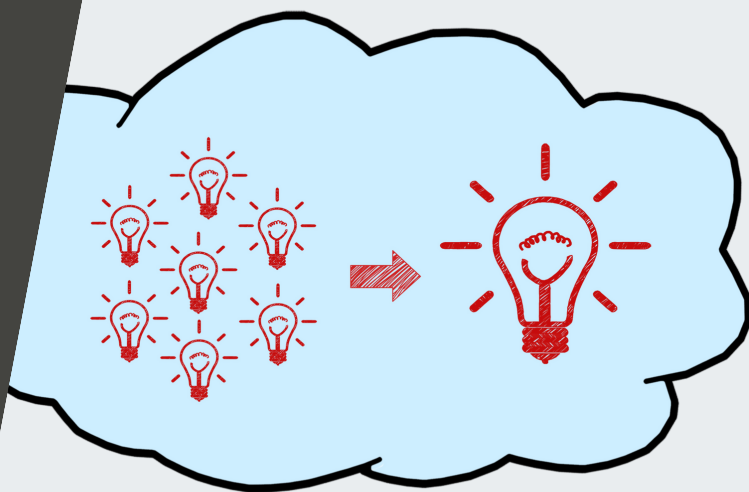
Now the end of the parish financial year (June 30) has passed, I am finding out more good features about Xero, including the following:

- The first one is that it is possible to print out monthly reports that show Depreciation on a monthly basis. All at the push of a button, with no manual calculation required.
- Within two days of end of month our Monthly Reports are very easy to prepare and e-mail out to Parish Council members prior to the monthly meeting.
- If I can get my old head around the system, it is possible that recurring transactions can be set up so that a click on 'OK' sends it to the designated account. This will be fantastic for offerings. In our parish most people use a direct credit for their regular offerings. To date I have about eight set up correctly.

To all parish treasurers my advice would be to make the change to Xero. It's an excellent software package and so well supported by the Presbyterian Church."

*Mary Mill
Treasurer, Kapiti Uniting Parish, 15 August, 2020*

Consolidation update



The cut-off date for treasurer's to send in their trial balances has now passed. Thank you to all who have already provided us with their trial balance. We have received about 75%, which is fantastic! Our team will now begin the process of pulling all of your information together.

Your presbytery treasurer support person will contact outstanding parishes over the coming weeks to touch base with how things are going, and what support may be required.

Your Treasurer Support Team Details

Northern Presbytery	Cunny Atchinson	caatchison49@gmail.com
Kaimai Presbytery	Martyn Vincent	Martyn@presbyterian.org.nz
Pacific Presbytery	Jenny Erhard	treasurersupport@pipresbytery.org.nz
Presbytery Central	Peter MacKenzie	support@presbyterycentral.org.nz
Alpine Presbytery	Gail Weaver	treasurersupport@alpinepresbytery.org
Southern Presbytery	Roslyn Boyes	OtagoSouthland@presbyterian.org.nz
Te Aka Puaho	Tania Rose	Taniarose@akaaccounting.co.nz

ANZ PHASING OUT CHEQUES

ANZ has issued the following regarding cheques:

"We're phasing out cheques at ANZ as a method to receive or make payments From 1 June 2021. If you use cheques to receive or make payments, you'll need to start using alternative options before 1 June 2021. We're here to help you understand the best option for you or your business, and ensure you're set up before this date. Read more anz.co.nz/cheques or for assistance: Business banking contact your ANZ Relationship Manager or call 0800 269 249; Commercial & Agri contact your Commercial & Agri Service Team 0800 21269; Institutional contact your ANZ Account Manager."

